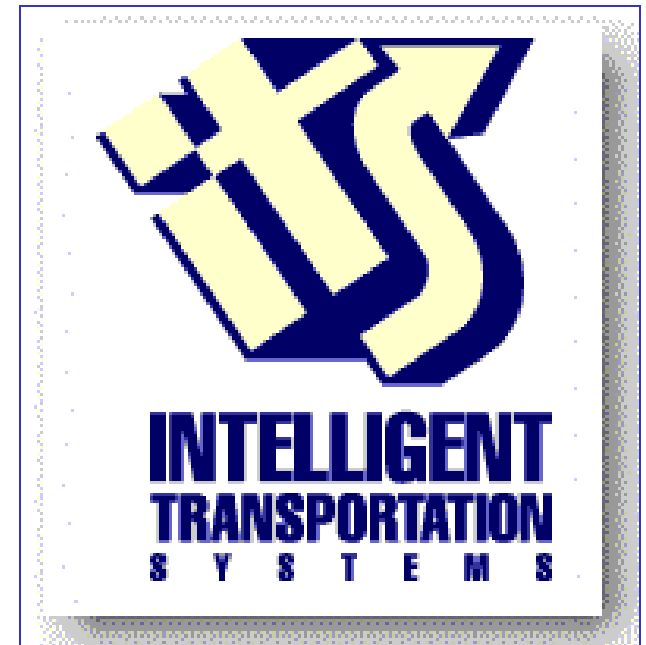


Support and Asset Inventory Management of ITS Devices

Western States Forum

June 2010



Jason Shaddix, ITS Support Lead
Oregon Department of Transportation



The goal of this presentation is to show how ODOT has utilized a **Computerized Maintenance Management System (CMMS)** to help solve many of the problems we face trying to support systems that are spread around a mostly rural state.



Outline

1. Presenter Information
2. ITS Assets
3. ITS Support
4. MicroMain Overview: Client, Reports, PDA
5. MicroMain Web Work Requests
6. MicroMain Web Asset Management
7. Conclusion



Presenter Information

Jason Shaddix, ITS Support Lead, Oregon DOT

- Team leader for ITS field support and ITS application developers.
- 10 years working in ITS, 5 additional years working in traffic signals
- Regional ITS Support Build-out: Offices, trucks, equipment, spares
- MicroMain Implementation: Review proposals, procure, deploy, enhance
- Alternate Network Connectivity –DSL, Cellular, WiFi.
- Traffic Signals Integration



ITS Assets

- Field Devices
- Transportation Operations Centers
- Servers
- Systems / Applications
- Traffic Signals



Oregon ITS in 2000

- 12 cameras in Region 1
- 6 RWIS stations
- 1 camera in Bend
- IT has 1½ FTE committed to ITS
- 5 Servers (RWIS Data Collection)
- 1 Application (SCAN)



Oregon ITS in 2010

- Total of approx 820 Field devices
- 4 Transportation Operation Centers
- 66 Servers
- 25 Applications
- 256 Cameras
- 98 Variable Message Signs
- 142 Ramp Meters
- 142 Portable Variable Message Signs
- 79 Road Weather Information Systems
- 100 Other devices such as HAR, Weather Warning Systems, and Ramp Gates.
- ODOT has 14 FTE committed to ITS Support



Traffic Signals Integration

- ODOT owns around 1000 traffic signals
- Implementing Adaptive Traffic Control
- Implementing Central Traffic Management
- Approx 30 traffic signals online so far
- 146 planned upgrades & connections this year
- Significant changes in support needs





Weather Stations

Cameras

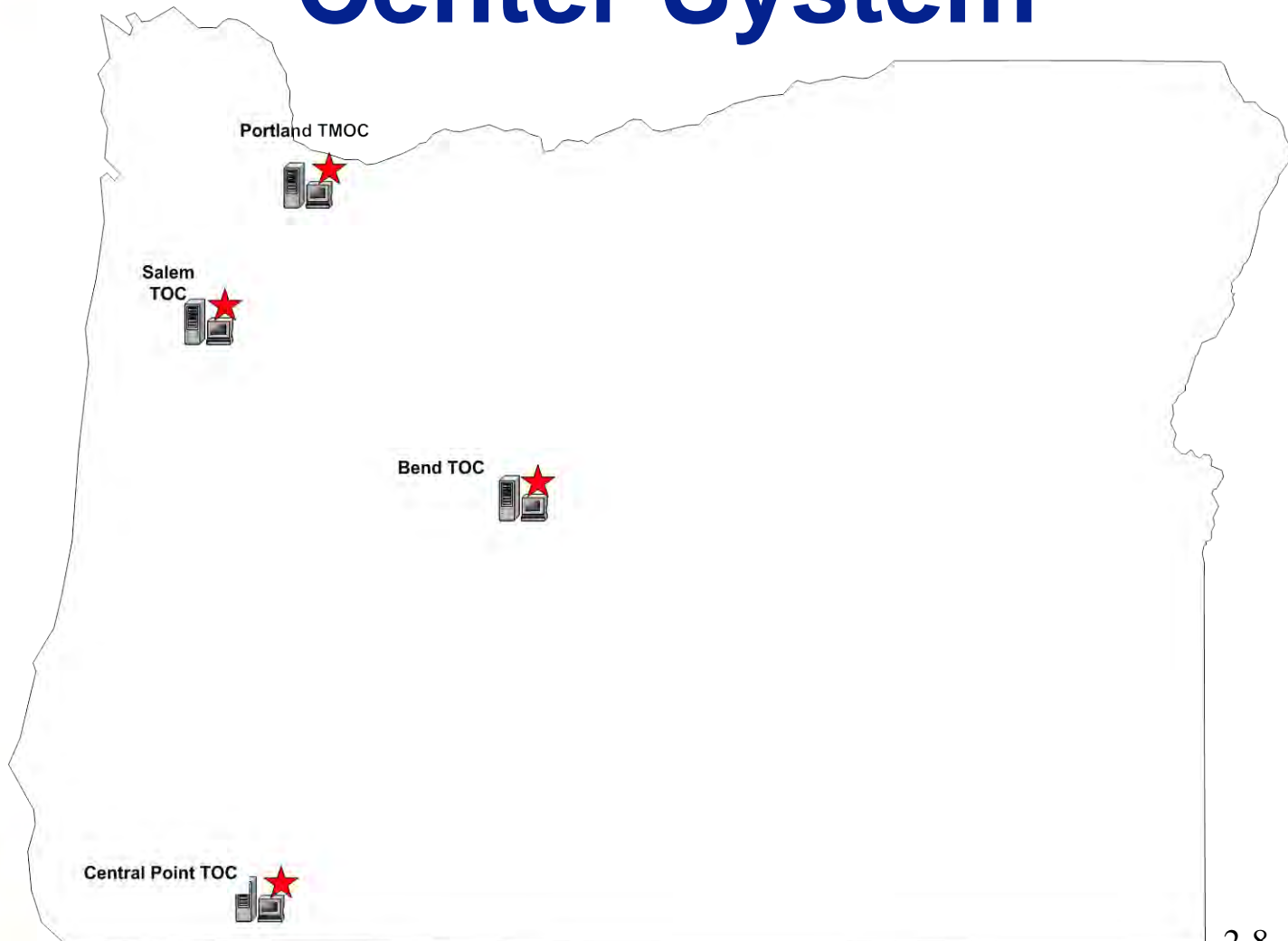




VMS



Transportation Operations Center System



Region 1 -Portland

ODOT's Region 1 is mostly urban, including the Portland metro area. Region 1 constitutes approximately 44% of the ITS infrastructure in Oregon. ODOT-owned fiber optic communications infrastructure is available on most highway systems, and is the primary communications method employed.

- 135 Cameras
- 35 Variable Message Signs
- 142 Ramp Meters
- 34 Portable Variable Message Signs
- 14 Road Weather Information Systems
- 3 Other devices such as HAR, Weather Warning Systems, and Ramp Gates.



Region 2 -Salem

ODOT's Region 2 is the second largest area asset-wise, and is comprised of mostly rural installations, with a few urban systems.

- 40 Cameras
- 15 Variable Message Signs
- 50 Portable Variable Message Signs
- 9 Road Weather Information Systems
- 56 Other devices such as HAR, Weather Warning Systems, and Ramp Gates.

[Region 2](#)



Region 3 -Medford

ODOT's Region 3 ties for the smallest area asset wise, and is comprised of mostly rural installations. Medford is the second region to build out and utilize a fiber ring for ITS and traffic systems.

- 29 Cameras
- 11 Variable Message Signs
- 19 Portable Variable Message Signs
- 10 Road Weather Information Systems
- 18 Other devices such as HAR, Weather Warning Systems, and Ramp Gates.

[Region 3](#)



Region 4 -Bend

ODOT's Region 4 has the third most ITS assets, and is mostly rural. Region 4 has been a leader in using broadband internet connections and implementing adaptive traffic control systems.

- 32 Cameras
- 11 Variable Message Signs
- 23 Portable Variable Message Signs
- 37 Road Weather Information Systems
- 7 Other devices such as HAR, Weather Warning Systems, and Ramp Gates.

[Region 4](#)



Region 5 -LaGrande

ODOT's Region 5 is the other area with the fewest ITS assets, and is the most rural of all the regions. No TOC.

- 20 Cameras
- 26 Variable Message Signs
- 16 Portable Variable Message Signs
- 9 Road Weather Information Systems
- 16 Other devices such as HAR, Weather Warning Systems, and Ramp Gates.

[Region 5](#)



Field Device Connectivity

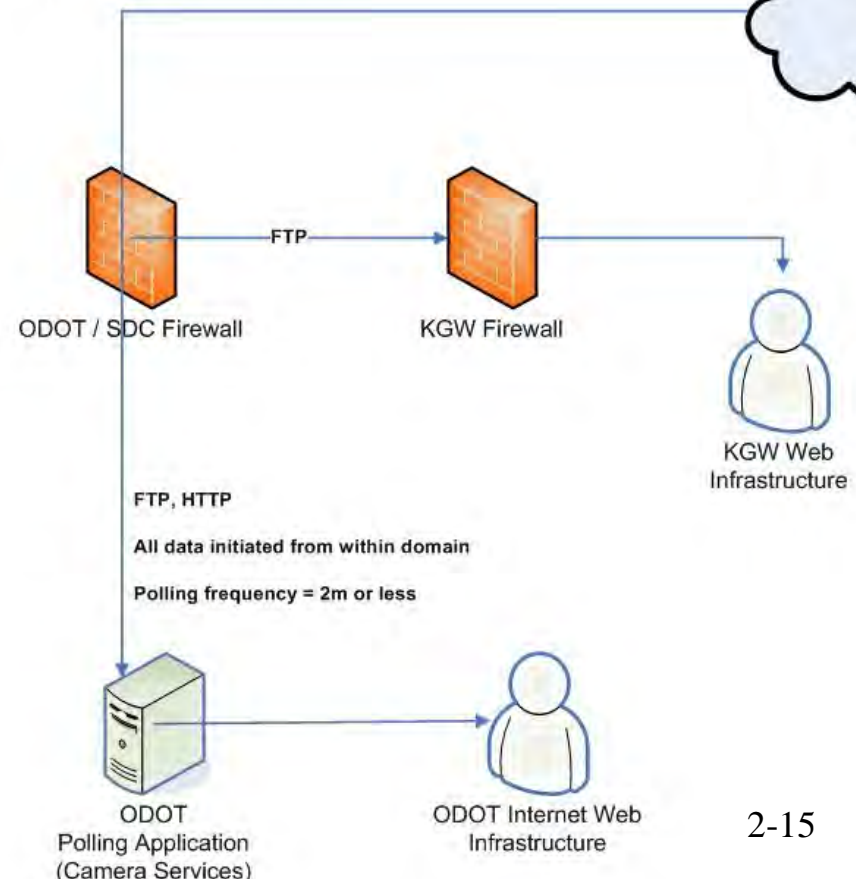
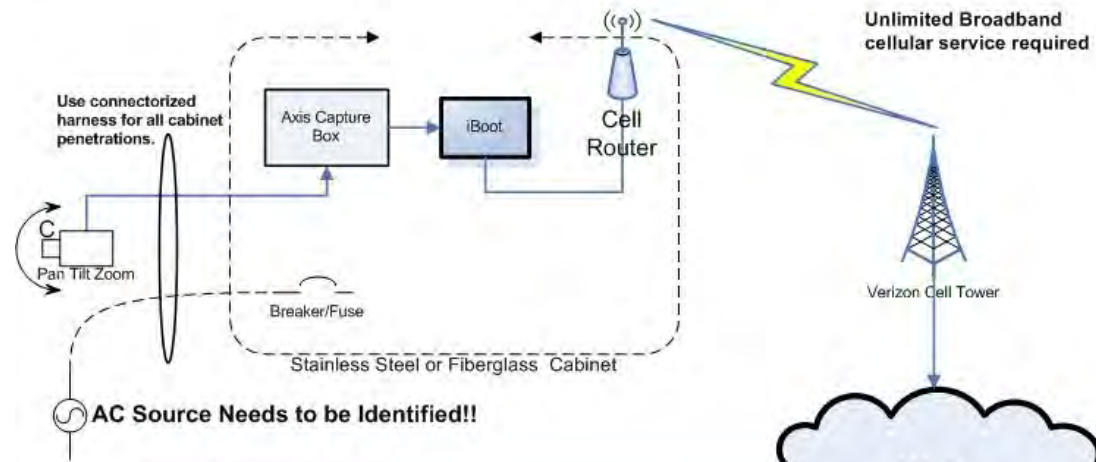
- Fiber Optics –ODOT Owned, leased dark fiber, bandwidth
- Frame circuits -56K, T1
- Microwave –ODOT owned
- POTS –Dialup
- Leased Lines -Serial
- Cellular –Public, Private
- Broadband –DSL, Cable



Field Device Connectivity



Falcon Cam Proposal



Network Architecture

- Each TOC has head end network gear to catch field circuits
- Devices point to their regional TOC
- Redundant (back-up) circuits between TOCs
- All public circuits are firewalled, and terminate in a DMZ
- One 3G CDMA Cellular Private Network connection, more planned



Challenges in Asset Management

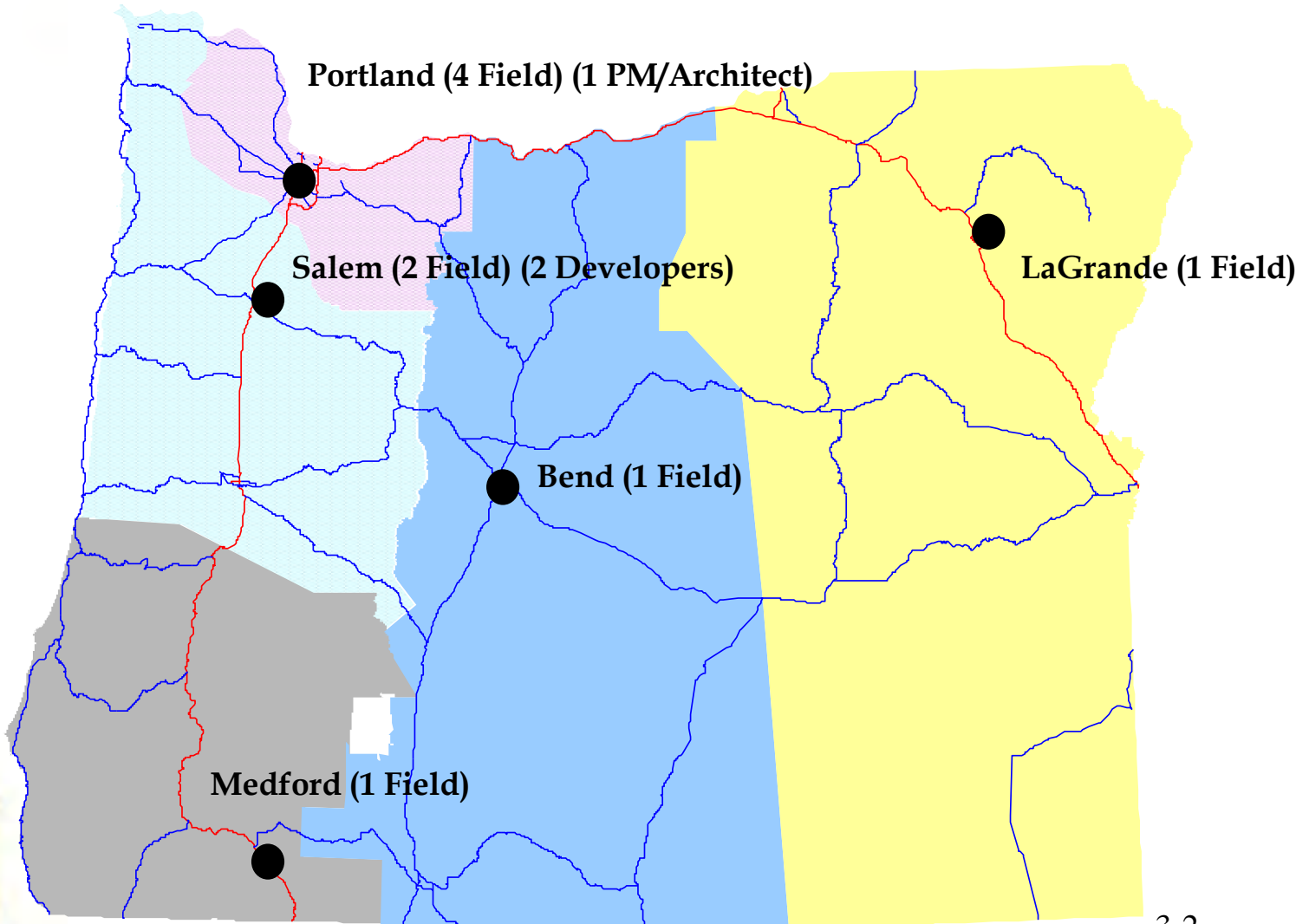
- Inventory Management
- Preventative Maintenance Scheduling and Tracking
- Asset Repair History
- Maintenance Cost Tracking
- Prioritization
- Standards



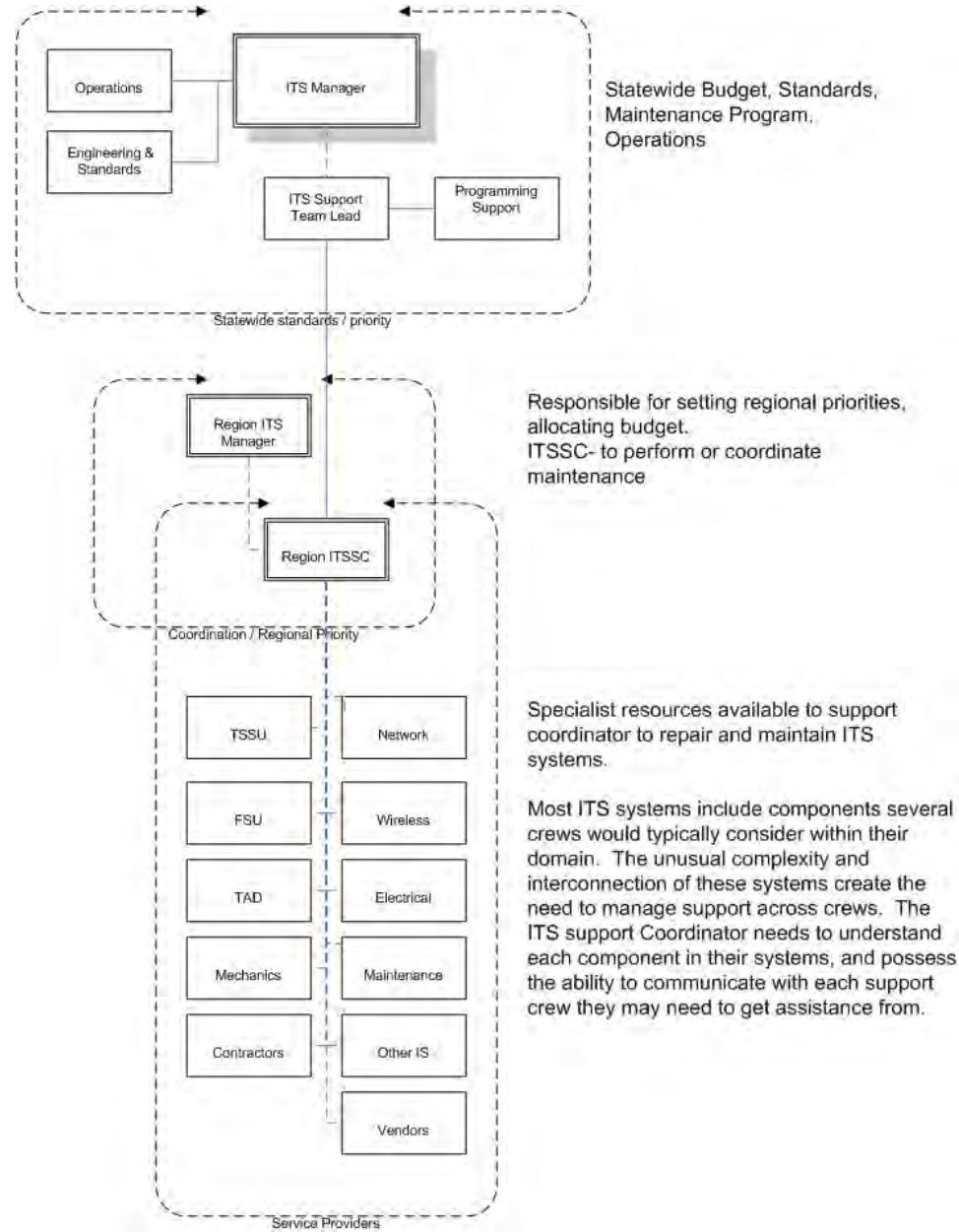
Oregon ITS Support



Regional Support Distribution



ITS Regional Organization



Specialist resources available to support coordinator to repair and maintain ITS systems.

Most ITS systems include components several crews would typically consider within their domain. The unusual complexity and interconnection of these systems create the need to manage support across crews. The ITS support Coordinator needs to understand each component in their systems, and possess the ability to communicate with each support crew they may need to get assistance from.

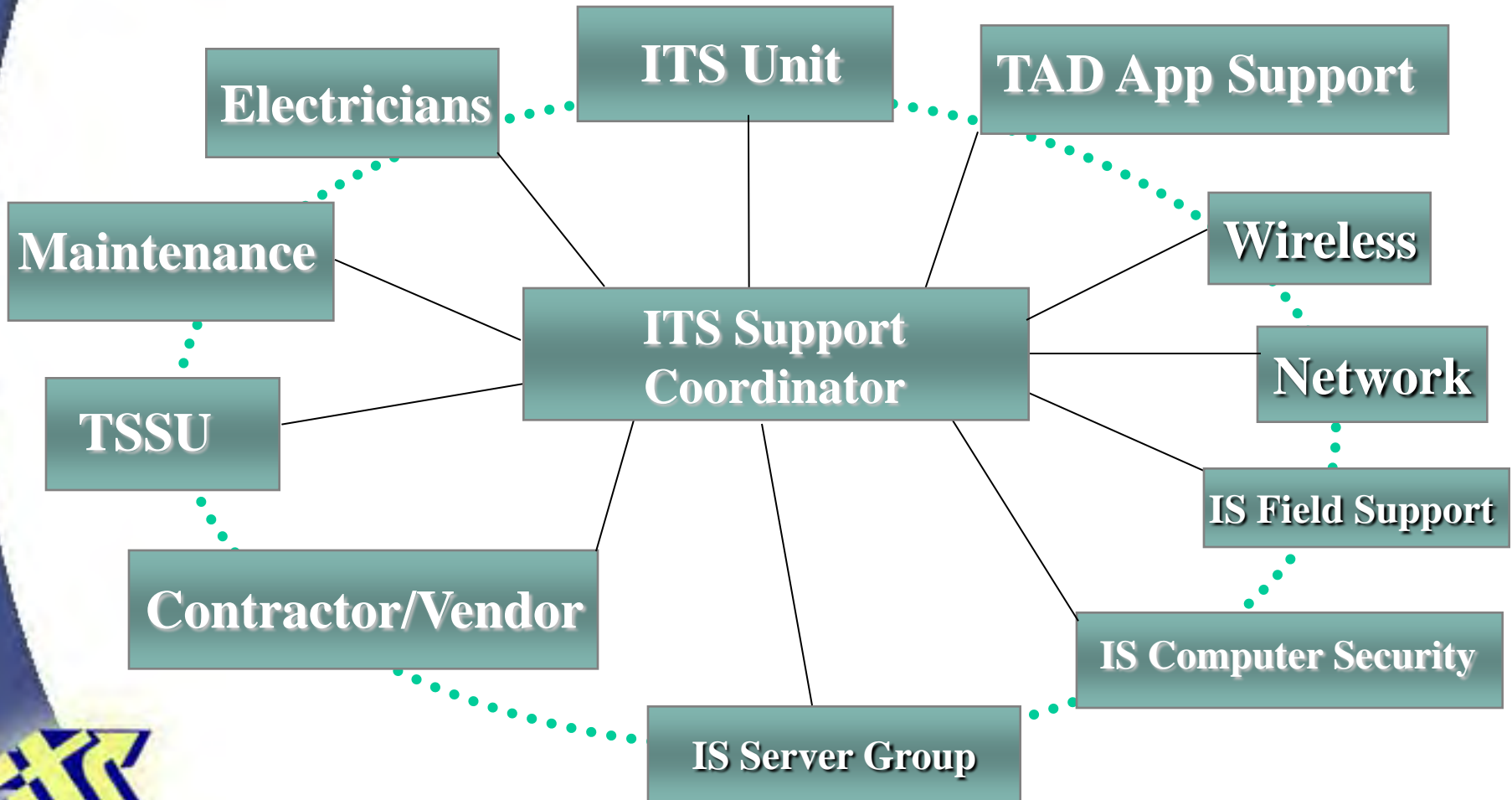


ITS Support Coordinators

- The ITS Support Coordinator performs, evaluates, and coordinates projects and activities that support operations and maintenance of ITS systems.
- Accountable for problem resolution even though effecting a solution may require action from many support teams.
- Single point of contact for TOC and field device issues.



ITS Support Providers



Working Together



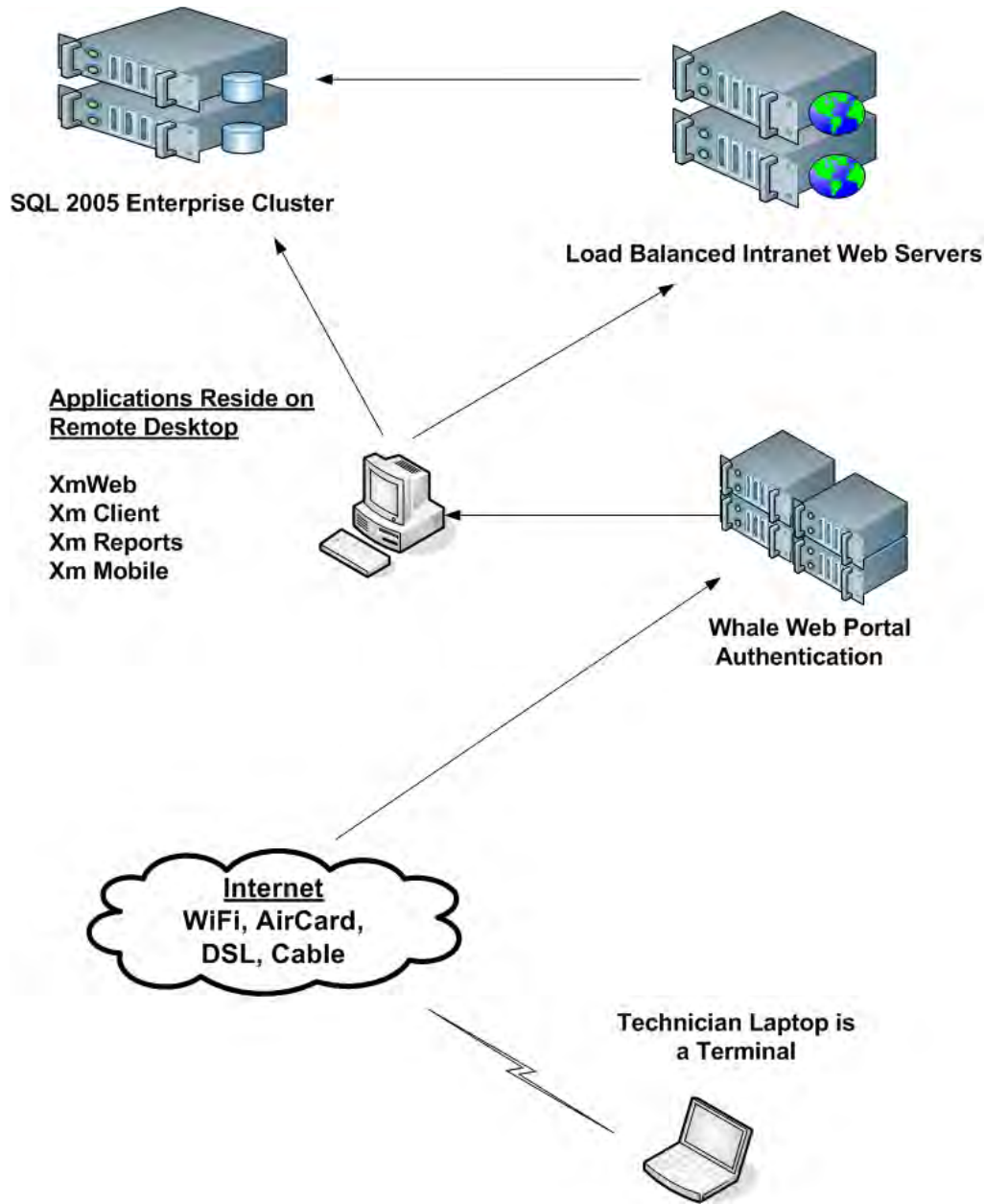
Remote Support

Technicians can access central applications from the field or home

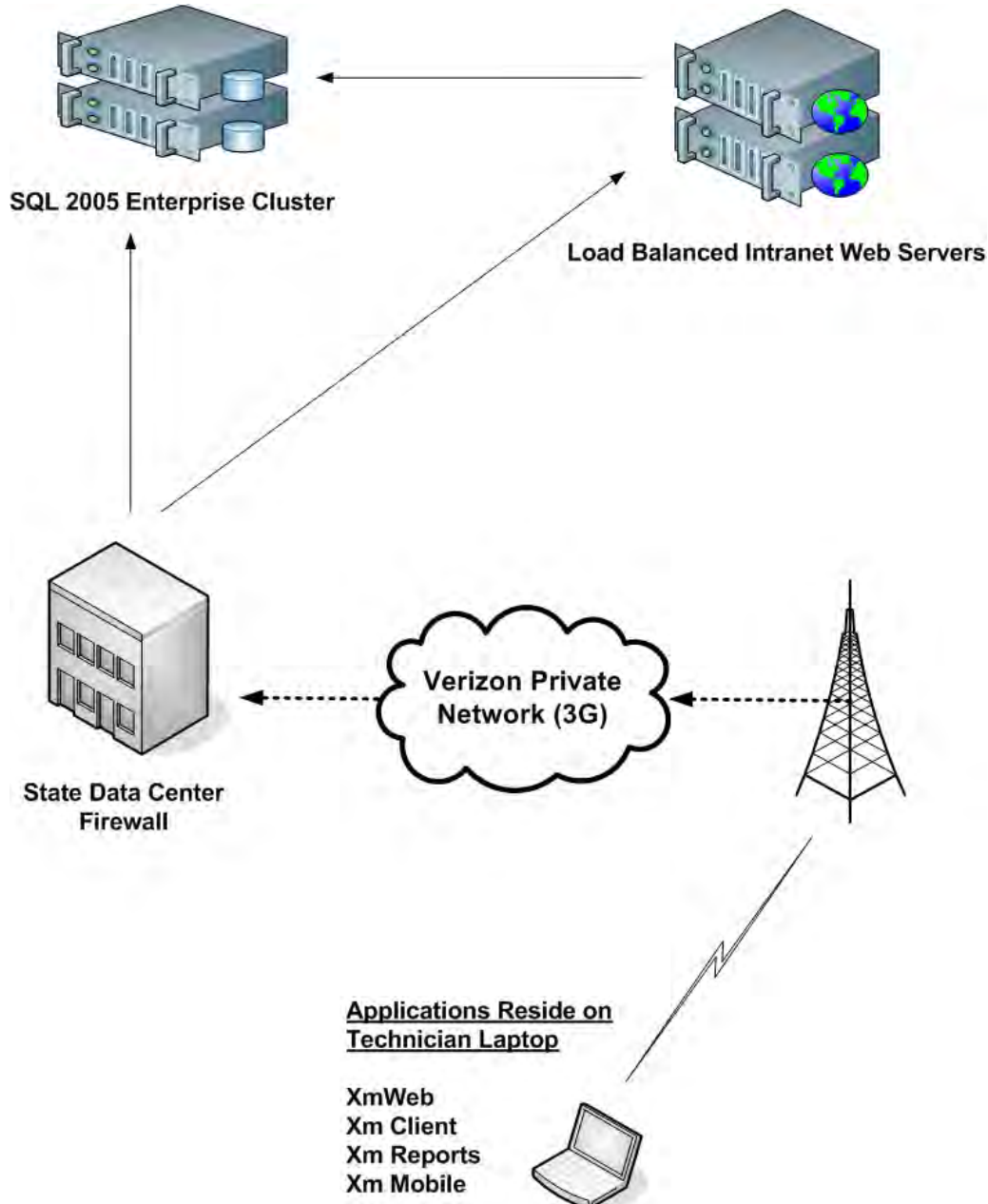
- VPN Web Portal with Remote Desktop
- NetMotion
- Verizon Private Network / Gobi
- PDA
- Blackberry



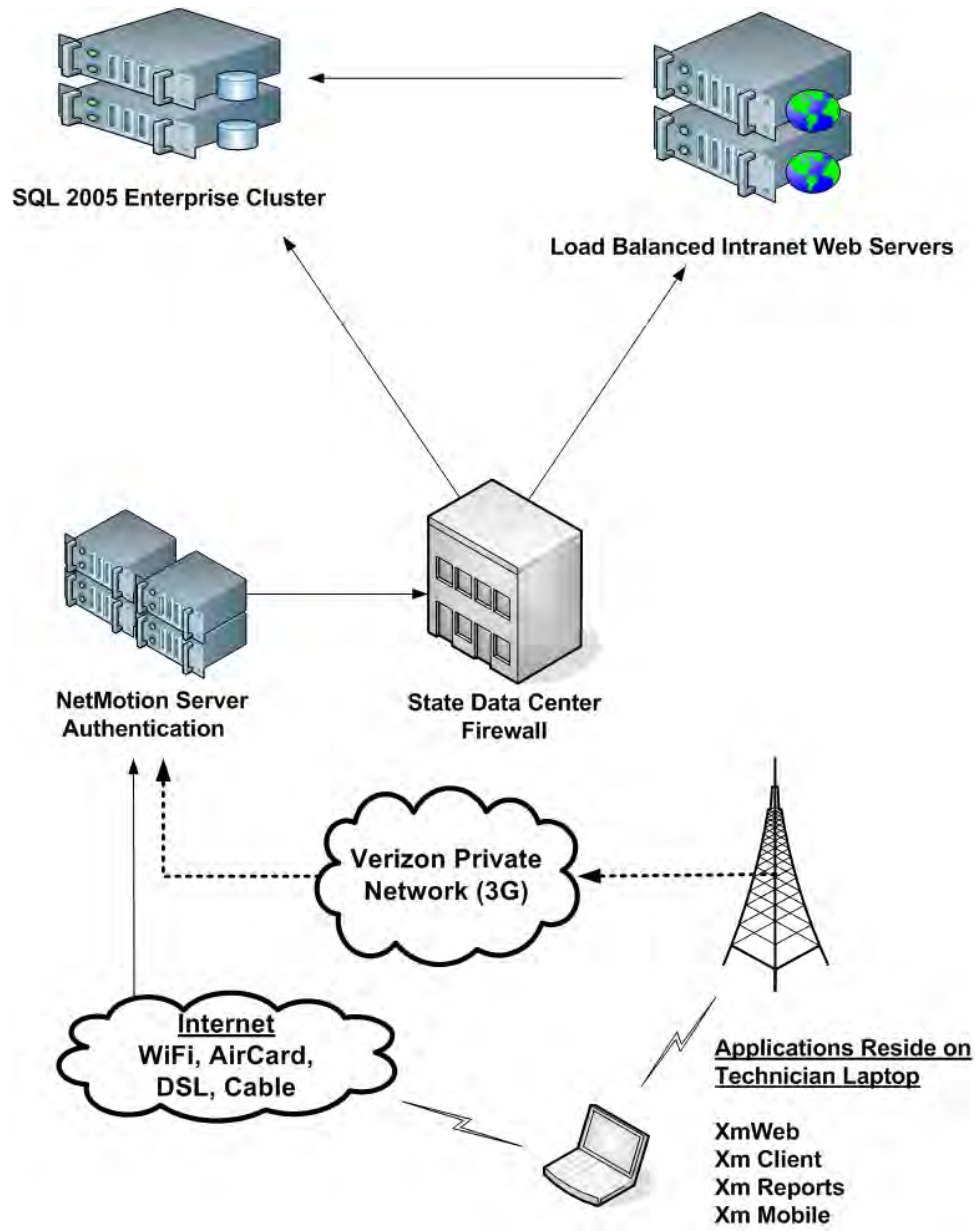
Whale Web Portal



Verizon Private Network



NetMotion



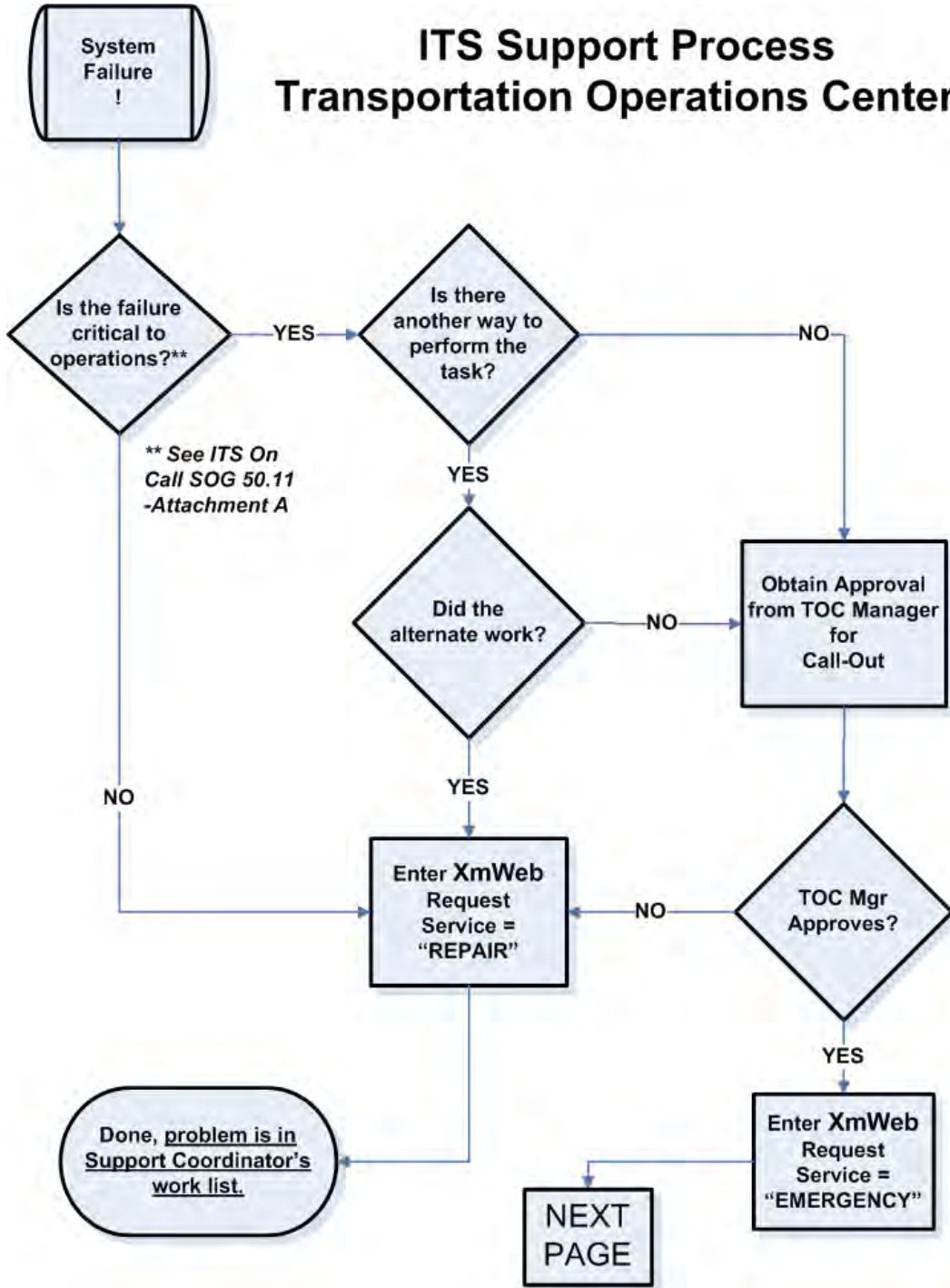
Statewide After Hours Support

Adherence to standards and using Micromain has allowed us to provide statewide after hours support

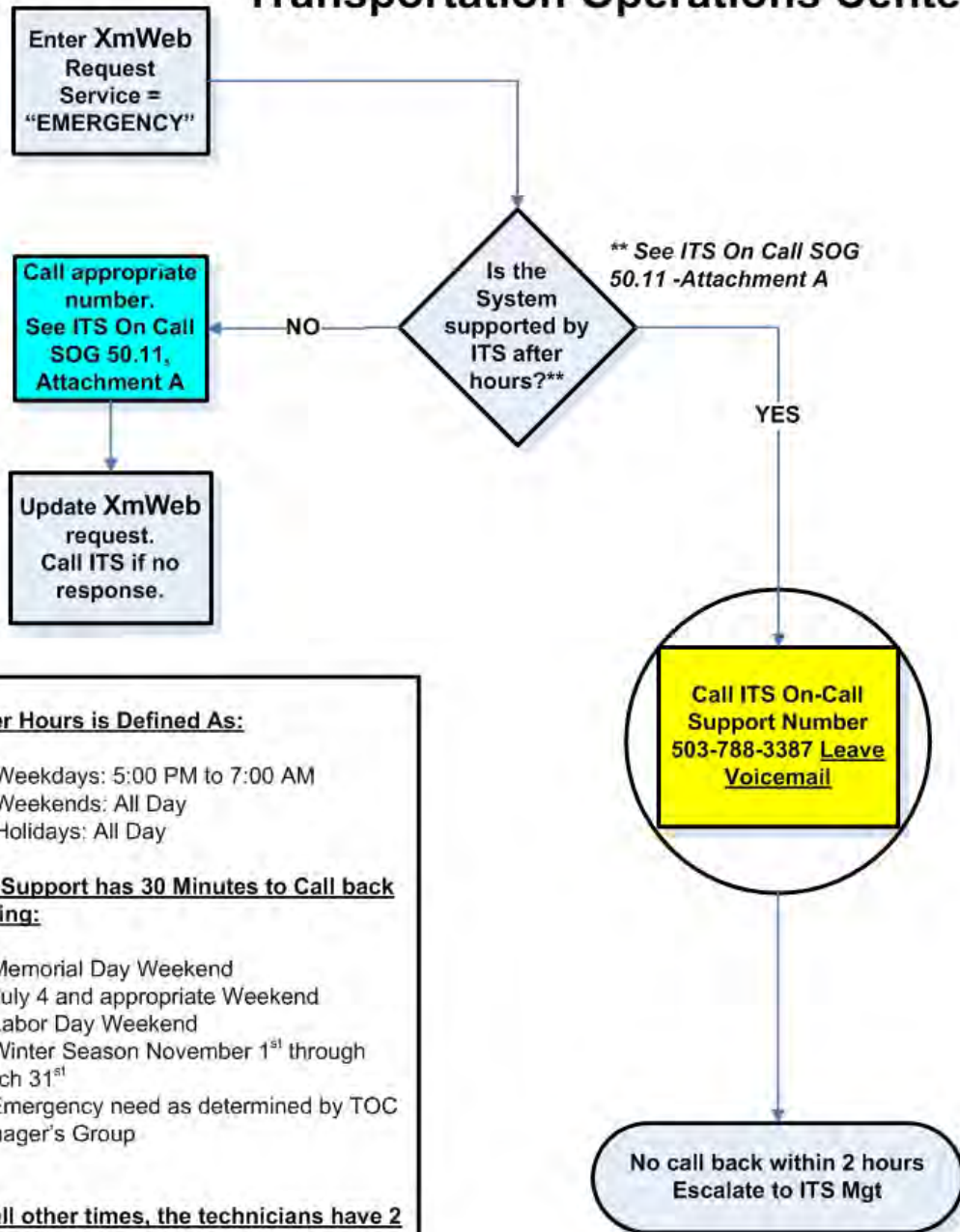
- Micromain is used by all dispatch centers
- Records problems and initiates emergency call outs very quickly
- On-Call staff, Support Coordinators, and management get auto-notifications
- Emergency notification to On-Call staff



ITS Support Process Transportation Operations Centers



ITS Support Process Transportation Operations Centers



After Hours is Defined As:

- Weekdays: 5:00 PM to 7:00 AM
- Weekends: All Day
- Holidays: All Day

ITS Support has 30 Minutes to Call back During:

- A) Memorial Day Weekend
- B) July 4 and appropriate Weekend
- C) Labor Day Weekend
- D) Winter Season November 1st through March 31st
- E) Emergency need as determined by TOC Manager's Group

At all other times, the technicians have 2 hours to call back



Regional Support Challenges

- Work Request Management and Distribution
 - Requests: Techs, Dispatch Centers, Business
 - Work Flow / Process
 - Priority
 - Change Notification
 - Coordination of Efforts
- Crew Supervision
 - Workload Management
 - Performance Measures
 - Standards Enforcement
 - Time Tracking



MicroMain Overview

ODOT ITS chose MicroMain as its Computerized Maintenance Management System to solve these asset management and support challenges.

ODOT evaluated 21 CMMS Applications, and decided on MicroMain based on features, standards, cost, and source code ownership.



MicroMain Components

- Server component: SQL database
- Xm Client
- Xm Reports
- Xm Mobile
 - Handheld (Win CE or Palm)
 - PC
- Xm Web



Application Details

- MicroMain Xm Enterprise SQL
- Purchase included source code
- Licenses are concurrent
- All user interfaces connect to central SQL DB



ODOT Server Environment

- ODOT Network Domain
- MS Windows Server 2008 64Bit
- MS SQL Enterprise 2005 (Clustered)



ODOT PC Environment

- Windows XP Professional, SP3
- MS Office 2003
- MicroMain Xm Client –MS Access
- MicroMain Xm Reports –MS Access
- .Net Web client
- IE Explorer V7
- .Net PDA client



Xm Client

ODOT MicroMain XM v1.5

File Edit Records Insert Window Exit

MicroMain XM Menu

Updated 12/11/09

Administration

Actions

Resources

Facilities

Fleet

Site

Highways

Assets

Asset Explorer Tree

ITS OREGON

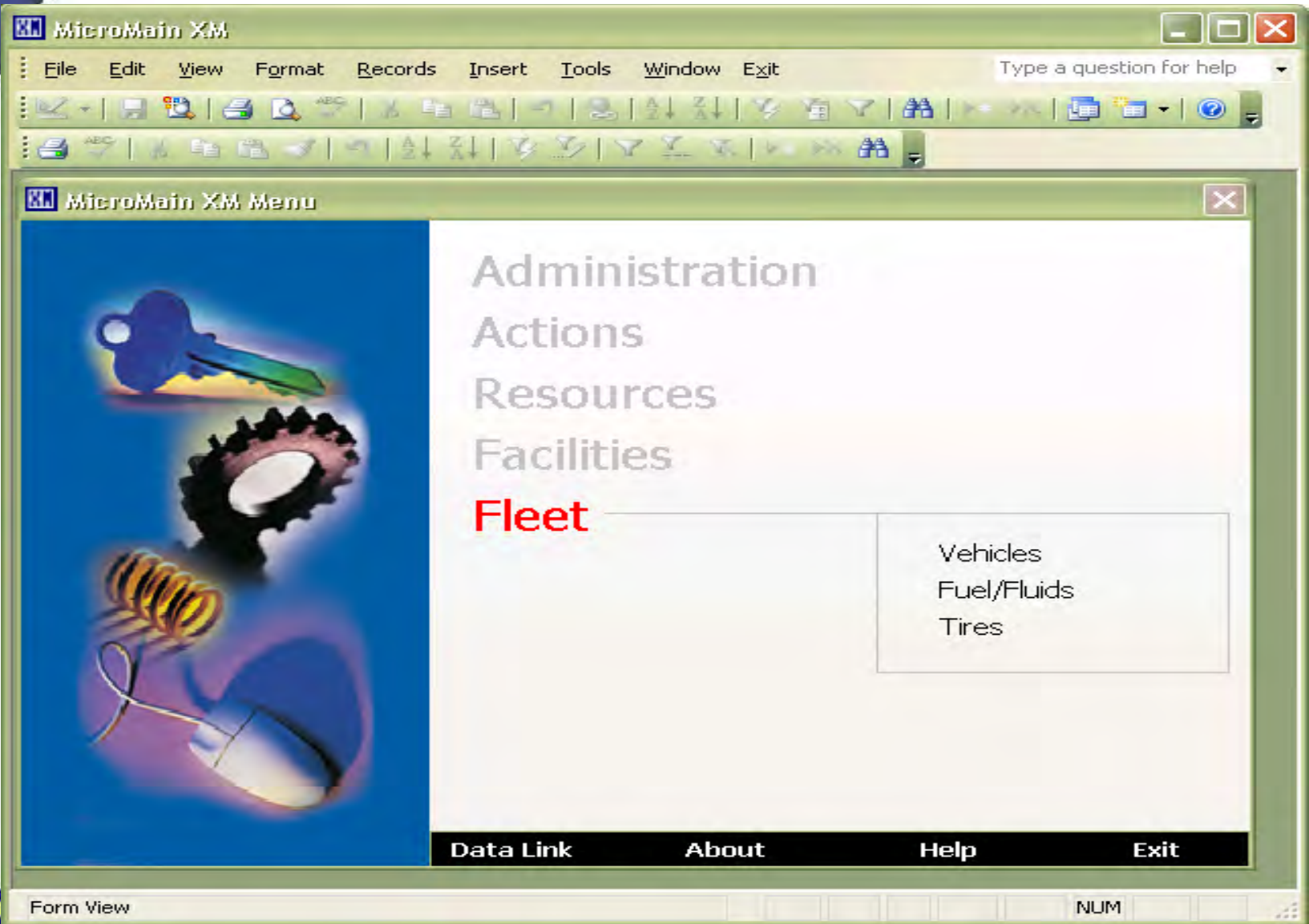
1 2 3 4 5

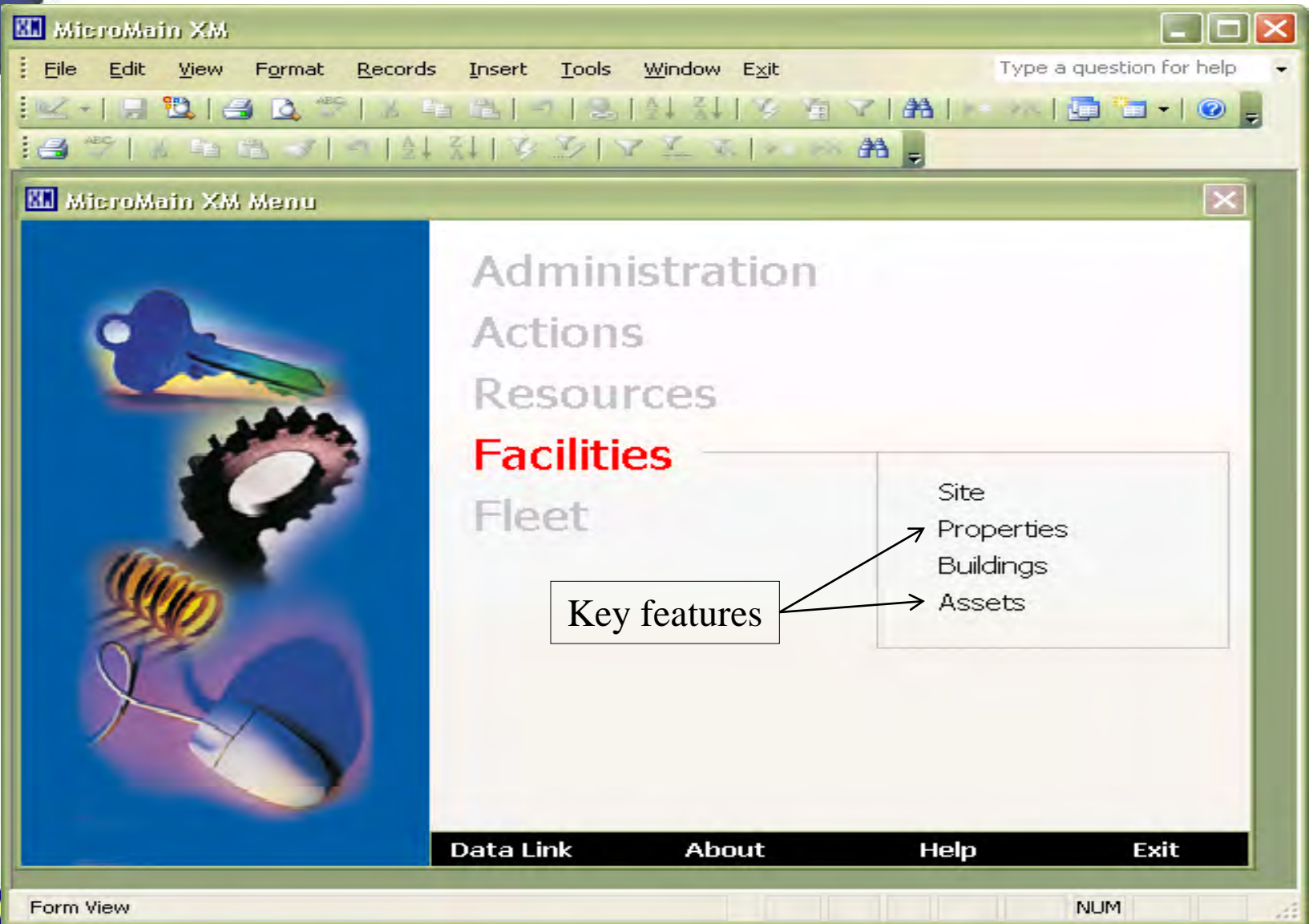
Data Link Contact ODOT 1.5 Help Exit

Form View 4-6 NUM

- Quick Summary
- MS Access
- Linked Tables
- Accidental Changes
- Used by Admin







ODOT MicroMain XM v1.5

File Edit Records Insert Window Exit

Asset: VMS, I-84 EB @ Biggs Jct, Hwy2, MP103.8, Property: Region 4

New [Icons] [LIST VIEW] [?]

Parts Other Costs Warranties Tasks Child Assets Moves Documents Comments Project Info

Asset Picture Details Assignment Agencies Contacts Functions Activities Specifications Conditions Meters

Asset VMS, I-84 EB @ Biggs Jct, Hwy2, MP103.8 Active

Property Region 4 Highway 2

Description Type 1 MP 103.8

Asset Priority Medium Parent I-84 @ Celilo - Biggs Jct - US97 - Rufus

Seasonal Priority

Type Equipment

Account M6284416/701-L18

Group VMS

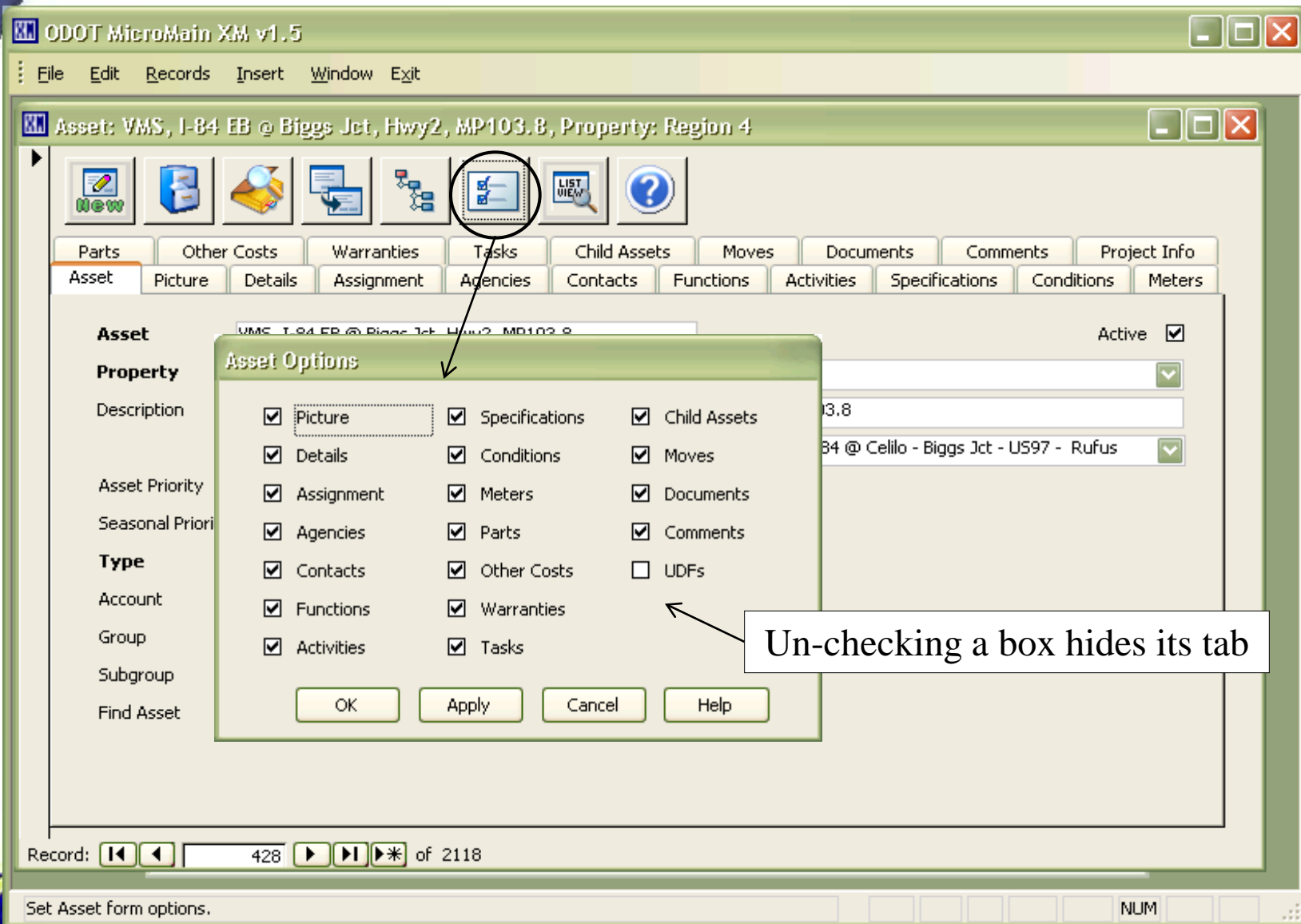
Subgroup Type 1

Find Asset

Record: [Navigation] 428 of 2118

Set Asset form options. NUM

All detail data for this record



Un-checking a box hides its tab



- Parts
- Other Costs
- Warranties
- Tasks
- Child Assets
- Moves
- Documents
- Comments
- Project Info
- Asset
- Picture
- Details
- Assignment
- Agencies
- Contacts
- Functions
- Activities
- Specifications
- Conditions
- Meters

All work requests for this asset

Asset VMS, I-84 EB @ Biggs Jct, Hwy2, MP103.8 Active

Property Region 4 Highway 2

Description Type 1 MP 103.8

Asset Priority Medium Parent I-84 @ Cello - Biggs Jct - US97 - Rufus

Seasonal Priority

Type Equipment

Account M6284416/701-L18

Group VMS

Subgroup Type 1

Find Asset

Report: Date from 5/24/2009 to 5/24/2010

Total Cost 1,731.50
Total Work Orders 11

WO Number	Service	Description	Status	Requested	Issued	Completed	Cost	Primary Failure	Comments
14456	Annual PM, VMS, 5/13/2010	Autogenerated annual VMS PM. Inspect Mounting Hardware - Ensure Mounting Hardware, esp bolts are tight, and in good condition	Requested	4/11/2010 3:52:14 PM			0.00		
11688	Failed Inspection Point(s) from WO 10009	POINT: Sign enclosure fan operation ACTION: Observe sign housing fan operation, Troubleshoot thermostat, fan	Requested	8/19/2009 9:40:16 AM			0.00		81809 JT fan on pvc black pipe by door is out. Any question call me. POINT: Sign enclosure fan operation Comments: Observe sign housing fan operation. 81809 JT JAWS pm sign failed fan behind power suplys middle pvc tube left side facing sign.
10009	VMS PM, Annual (Region 4), 3/13/2009	Autogenerated annual VMS PM. Inspect Mounting Hardware - Ensure Mounting Hardware, esp bolts are tight, and in good condition	Completed	3/13/2009 1:59:57 PM	8/19/2009 9:56:49 AM	8/19/2009 3:46:27 PM	432.00	No Failure	
8509	r/w	polled sign, gave 'service A' message, shows message on.	Canceled	10/22/2008 9:41:16 AM	7/27/2009 9:12:38 AM		0.00		
6395	VMS PM, Annual (Region 4), 11/14/2008	Autogenerated annual VMS PM. Clean Lexan - Clean Lexan inside and out	Completed	3/10/2008 10:19:37 AM	9/15/2008 8:00:38 AM	9/17/2008 4:55:43 PM	162.00		9/15/08 GRB & JJS Annual PM.
5213	Repair	Do you know that we have to go thru Standalone to activate this sign?	Completed	12/7/2007 12:00:20 PM	12/10/2007 7:25:06 AM	12/10/2007 7:25:12 AM	27.50	Operator Error	12/10/07 0715hrs - JAW5 - Checked operation with Launcher and was successful. Confirmed with operator what occurred and found operator only attempted once then went to Skyline. 11/25/08 JAW5 - Have not been able to find the UPS that was repaired and returned per ups tracking below. Need to find UPS and re-install at this location.
5182	Repair	Re-install UPS at this location. VMS would not work, Standalone came back ring no answer.	Open	12/2/2007 9:01:33 PM	4/16/2008 11:22:08 AM		67.50		
3669	VMS PM, Annual (Region 4), 8/31/2007	Preventative Maintenance for permanent Variable Message Signs Inspect Mounting Hardware - Ensure Mounting Hardware, esp bolts are tight, and in good condition	Completed	6/13/2007 6:14:11 PM	9/25/2007 4:55:30 PM	9/25/2007 4:56:09 PM	405.00	No Failure	9/19/07 GRB & JJS Annual PM. Cleaned and checked filters. Station 4 contacted the sign and installed and removed a message. Good comms. Beacons were activated and de-activated.
1256	VMS PM, Annual (Region 4), 8/31/2006	Preventative Maintenance for permanent Variable Message Signs	Canceled	6/12/2006 1:08:58 PM			0.00	No Failure	
848	Repair	While in area requested that TOC test VMS. Found that communication was not possible. 1500hrs on site found controllers and power off. J IPS failed to	Completed	5/23/2006 8:46:55 AM	11/1/2007 5:10:48 PM	11/1/2007 5:19:47 PM	582.50	Part Failure	10/24/07 GRB & DA Checked charging, all ok. Performed conductance testing. Results follow. BAT 1 2 3 4 -- 236 236 224 230 mhrs
573	Emergency Repair	Sign not working. 03/31/2006 1000hrs Ken S. on site to check into problems. The IPS was turned off and we found the batteries were connected	Completed	3/30/2006 5:44:01 PM	4/5/2006 9:08:10 AM	4/5/2006 9:08:24 AM	55.00	Utilities	

ODOT MicroMain XM v1.5

File Edit Records Insert Window Exit

MicroMain XM Menu

Asset: Route 35 @ Pollalie Creek temp, Hwy 26, MP73.7, Property: Traffic Signals Region 1

New [Icons] [?] [LIST VIEW]

Parts Other Costs Warranties Tasks Child Assets Moves Documents Comments Project Info

Asset Picture Details Assignment Agencies Contacts Functions Activities Specifications Conditions Meters

Asset Route 35 @ Pollalie Creek temp, Hwy 26, MP73.7 Active

Property Traffic Signals Region 1 Highway 26

Description Temporary One-Way Signal MP 73.7

Asset Priority Seasonal Priority Parent

Type Area

Account <none>

Group Traffic Signals

Subgroup District 2C

Find Asset

Record: [Navigation] 2117 of 2117

Find an asset by name. NUM

Creates a clone of this asset

ODOT MicroMain XM v1.5

File Edit Records Insert Window Exit

MicroMain XM Menu

Asset: Route 35 @ Pollalie Creek temp, Hwy 26, MP73.7, Property: Traffic Signals Region 1

New [Icons] LIST VIEW ?

Parts Other Costs Warranties Tasks Child Assets Moves Documents Comments Project Info

Asset Picture Details Assignment Agencies Contacts Functions Activities Specifications Conditions Meters

Asset Route 35 @ Pollalie Creek temp, Hwy 26, MP73.7 Active

Property Traffic Signals Region 1 Highway 26

Description Temporary One-Way Signal MP 73.7

Asset Priority Seasonal Priority Parent

Type Area

Account <none>

Group Traffic Signals

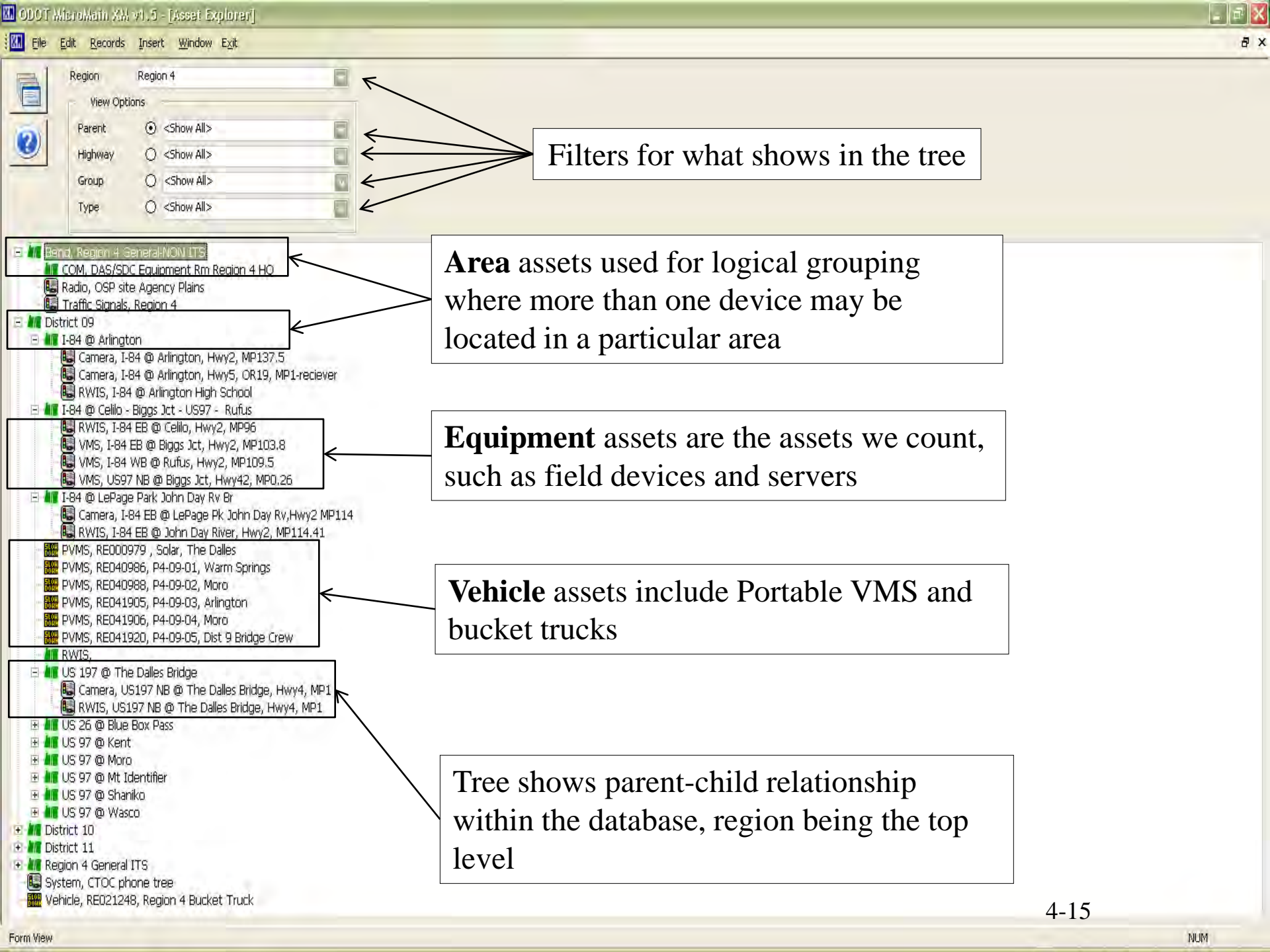
Subgroup District 2C

Find Asset

Record: [Navigation] 2117 of 2117

Find an asset by name. NUM

Brings up tree view of assets



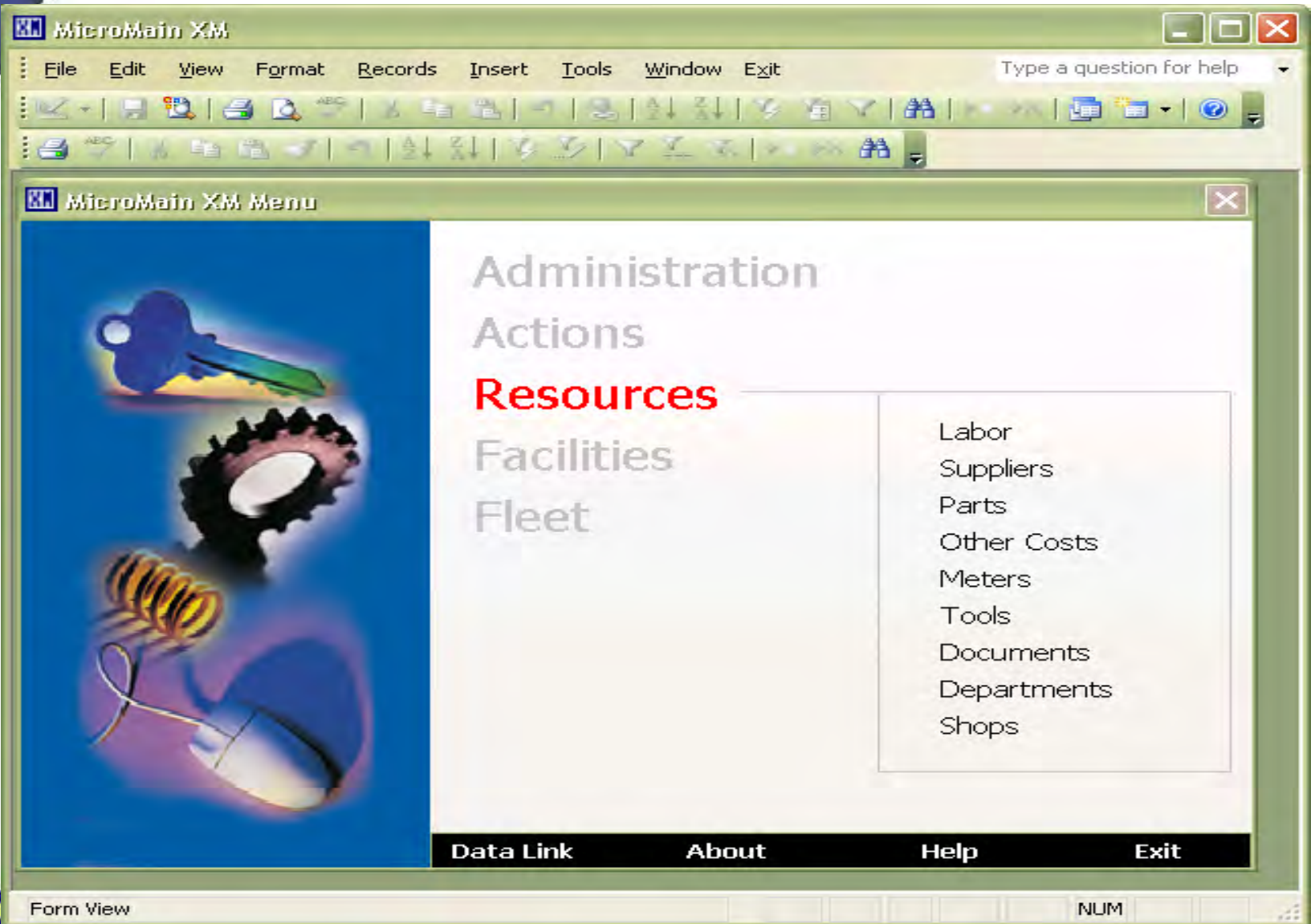
Filters for what shows in the tree

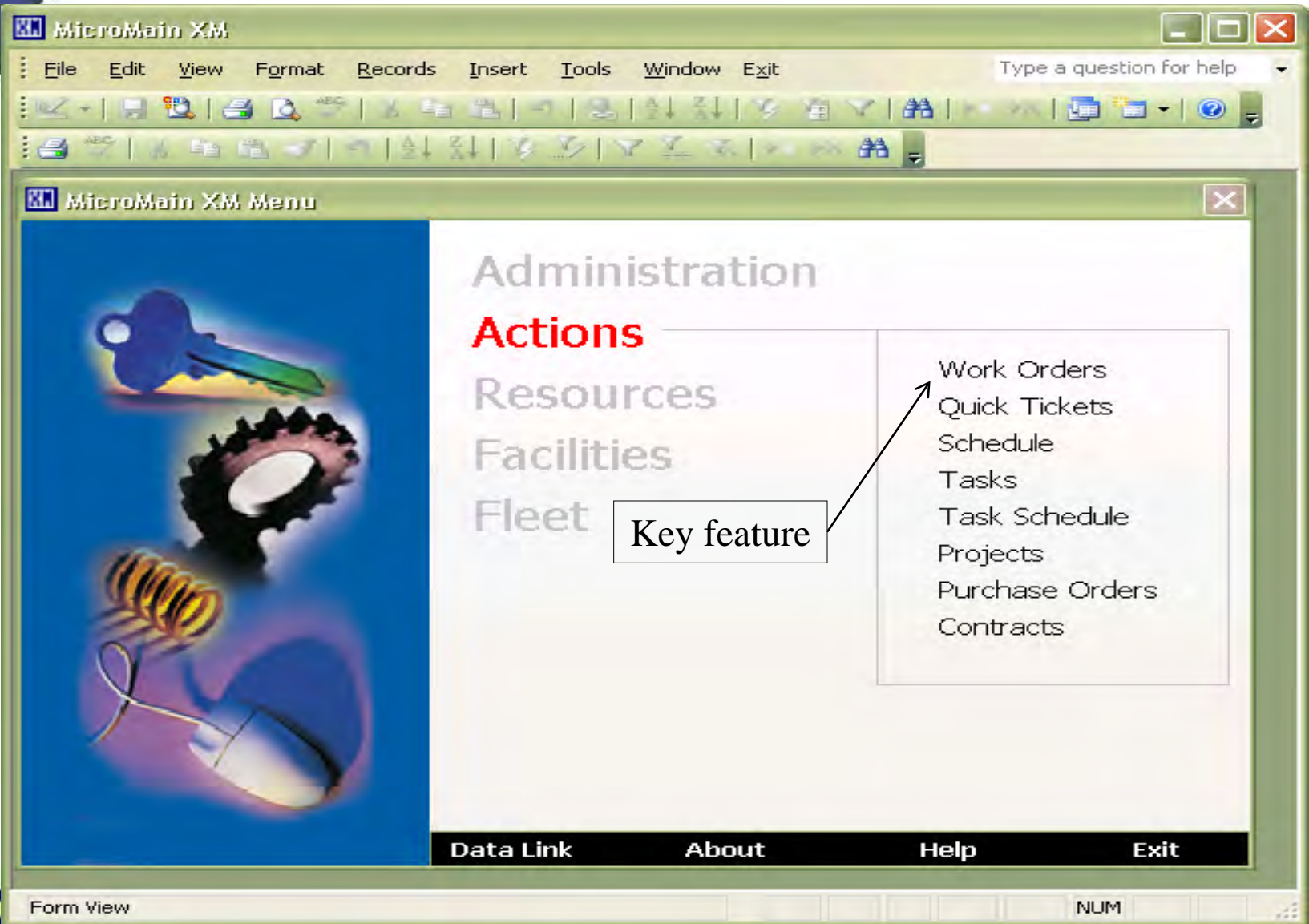
Area assets used for logical grouping where more than one device may be located in a particular area

Equipment assets are the assets we count, such as field devices and servers

Vehicle assets include Portable VMS and bucket trucks

Tree shows parent-child relationship within the database, region being the top level





MicroMain XM

File Edit View Format Records Insert Tools Window Exit

Type a question for help

Repair, Work Order Number 1569

Work Order Description Summary Labor Parts Other Costs Tools Lost Time Inspection Documents Comments UDFs

Service Repair

Property Traffic Signals Region 1

Asset Lower Boones Ferry @ 72nd/Bridgeport,Hwy1,MP

Location Hwy 1, MP 290.57,

Department

Account M1344466

Requester Kelly Central Point D Phone 858-3103

Shop Region 3 ITS

Supervisor Brock Joel L

Project

Report Work Order with Asset History

Status Open

Substatus B. Degraded Function

Type Remote

Priority 2

Due 7/18/2006

Standard 2.00 hours

Taken by (initials)

Vend Doc Num

Vend Doc Type

Printed

Inspection

Documents

xmMOBILE

Warranty

Lockout/Tagout

Safety

Shutdown

Close

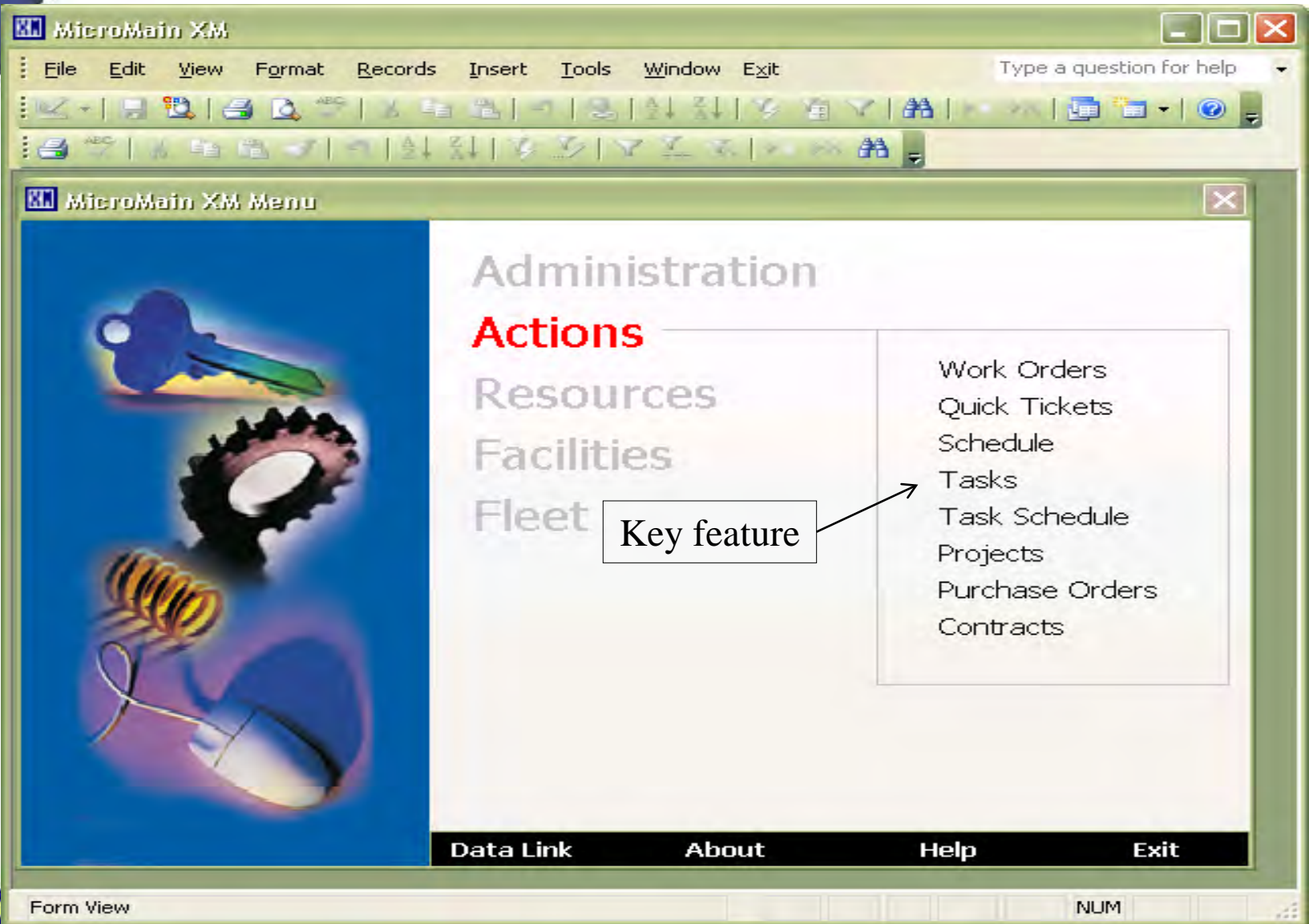
Record: 1

Set work order options.

NUM

These features not available through XmWeb





MicroMain XM

File Edit View Format Records Insert Tools Window Exit

Type a question for help

Task: CCTV PM, Annual (Region 2)

Estimated time it takes to perform task

Task

Activities Documents Comments UDFs

Task Description Summary Frequency Assets Labor Parts Other Costs Tools Inspection

Task: CCTV PM, Annual (Region 2)

Class: Minimum Requirement

Shop: Region 2 ITS

Supervisor: Owens Tony

Project Name:

Report: Work Order with Asset History

Standard: 1.00

Type: Preventive

Priority: 2

Task priority

Assign responsibility

This is the only interface to create or edit tasks

Find Task

Record: 13 of 48

Primary key field. Name of task.

MicroMain XM

File Edit View Format Records Insert Tools Window Exit

Type a question for help

Task: CCTV PM, Annual (Region 2)

Activities Documents Comments UDFs

Task Description Summary **Frequency** Assets Labor Parts Other Costs Tools Inspection

Frequency

None

Daily

Weekly

Monthly

Yearly

Meter

Starting from
3/1/2008

Last scheduled
3/13/2009

Any kind of schedule can be created

Every May 24 of every 1 year(s)

The fourth Monday of May of every 1 year(s)

Regenerate new task 1 year(s) after each task is completed

Record: 13 of 48

Generate work orders due every specified number of years. NUM

ODOT MicroMain XM v1.5

File Edit Records Insert

Displays all assets associated with this task

Task: CCTV PM, Annual (Region 2)



Date last completed

Activities Documents **Assets** Labor Comments Parts Other Costs Tools UDFs Inspection

Asset	Property	Base Reading	Last Completed
Camera, I-5 NB @ Dillard Access Rd, Hwy1, MP186.84	Region 2		5/13/2009
Camera, I-5 NB @ Enchanted Way, Hwy1, MP247	Region 2		10/19/2009
Camera, I-5 NB @ Lake Creek, Hwy1, MP214.51	Region 2		6/29/2009
Camera, I-5 NB @ N Albany, Hwy1, MP236.78	Region 2		10/2/2009
Camera, I-5 NB @ Perkins, Hwy1, MP261.88	Region 2		6/24/2009
Camera, I-5 NB @ Portland Rd, Hwy1, MP258.63	Region 2		8/13/2008
Camera, I-5 NB @ State St, Hwy1, MP254.9	Region 2		
Camera, I-5 SB @ Arndt, Hwy1, MP280.44	Region 2		6/23/2009
Camera, I-5 SB @ Kuebler, Hwy1, MP252.3	Region 2		10/19/2009
Camera, I-5 SB @ McVay Hwy Jct, Hwy1, MP190.94	Region 2		9/10/2009
Camera, I-5 SB @ Mission (OR22), Hwy1, MP253	Region 2		10/19/2009
Camera, I-5 SB @ Portland Rd, Hwy1, MP258.63	Region 2		7/23/2008
Camera, OR126W WB @ Cushman Flood, Hwy62, MP3.01	Region 2		11/23/2009
Camera, OR18 WB @ Murphy Hill, Hwy39, MP15.4	Region 2		5/20/2010
Camera, OR18 WB @ Valley Junction, Hwy39, MP23.6	Region 2		11/25/2009
Camera, OR22 EB @ Detroit South, Hwy162, MP51.3	Region 2		6/22/2009

Add Remove

Record: 13 of 48

Name of asset assigned to task work orders. Double-click to open Asset form.

NUM



ODOT MicroMain XM v1.5

File Edit Records Insert

Task: CCTV PM, Annual (R)

Activities Documents Comments UDFs

Task Description Summary Frequency Assets Labor Parts Other Costs Tools **Inspection**

Report: Inspection Sorted

Sort	Point	Group	Corrective /
0	Pest Infestation	All	Take measures to remove pests, and prevent future pest infestation
0	Print in Cabinet	All	Verify presence of print & readability. Get a print into the cabinet
0	Replace Filters	All	Replace filters
0	Update Inventory	All	Compare with Parts list. Generate list if none exists.
0	Vegetation Control	All	Ensure surrounding vegetation is not interfering with access, or prom
0	Verify Communications	All	Verify communications with dispatch or central. Troubleshoot
0	Weather Striping	All	Check the condition of the weather striping on all cabinets & signs.
0	Clean Window/Dome & housing	CCTV	Clean Lexan or Glass enclosures
0	Replace Dessicant	CCTV	Replace dessicant pack & Indicator strip
0	Fiber Cable -Jboxes	Fiber Infrastructure	Ensure fiber cable is separate from copper cables, and not in danger
0	Fiber Cable -Labeling	Fiber Infrastructure	Ensure fiber cable is permanently marked with origination, and functi
0	Fiber Cable -Slack	Fiber Infrastructure	Ensure slack is coiled neatly and stored securely in a safe location. C
0	Fiber Jumpers -Protected	Fiber Infrastructure	Ensure fiber jumpers are not kinked in FDU, doors, tie wraps, equipm

Record: [Play] Task Inspection NUM

Buttons: Add Group Add Remove

Inspection points are added and removed from the task here

Points can be grouped

Clean Window/Dome & housing
Replace Dessicant

Add Group Add Remove

Points can be added individually or by group




MicroMain XM

File Edit View Format Records Insert Tools Window Exit

Type a question for help

MicroMain XM Menu



Administration

Actions

Resources

Facilities

Fleet

Key feature

- Work Orders
- Quick Tickets
- Schedule
- Tasks
- Task Schedule
- Projects
- Purchase Orders
- Contracts

Data Link About Help Exit

Form View NUM

Queues tasks

Creates work requests from queue

Task Schedule

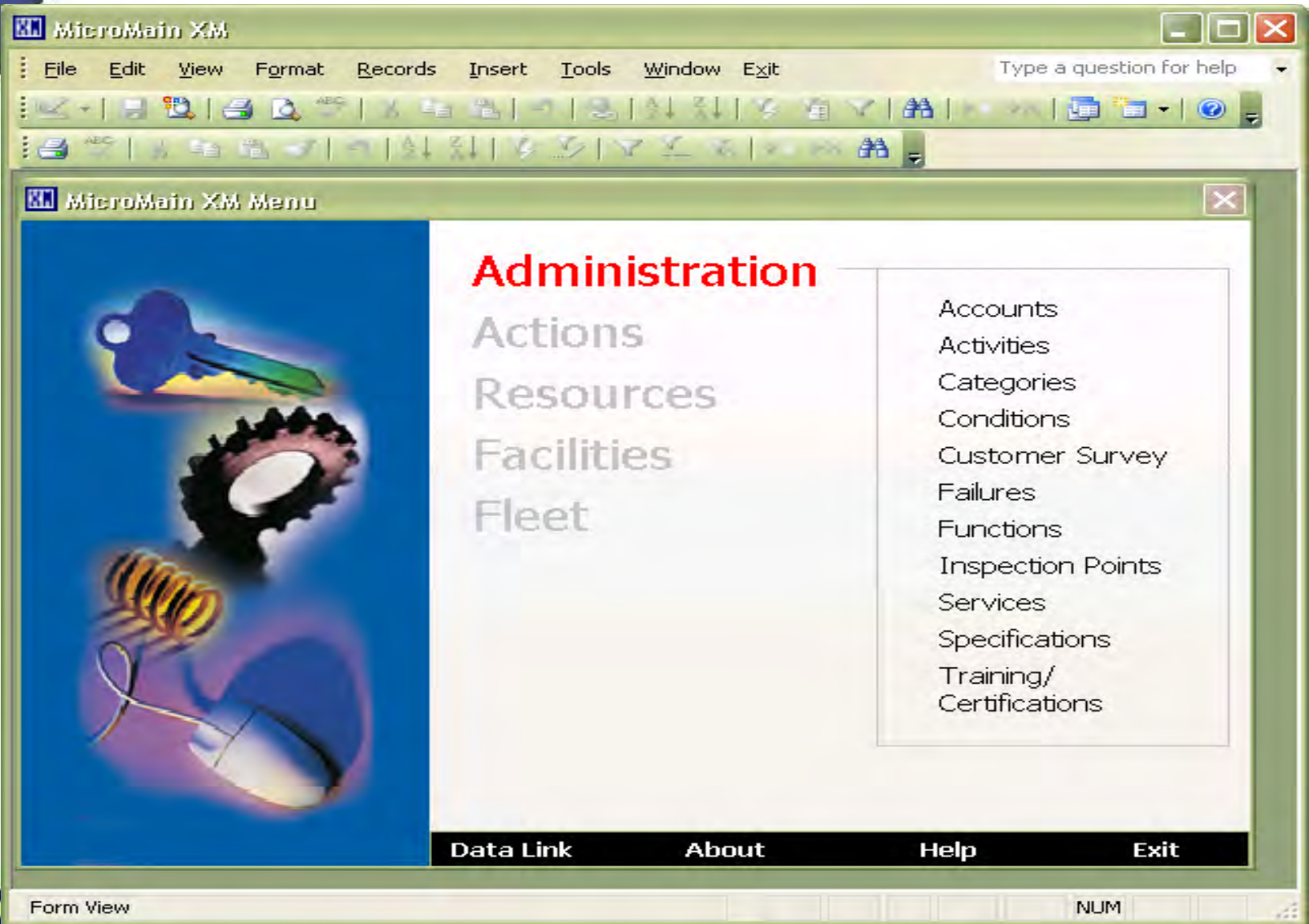
WO's created up to: 6/28/2010 3/30/2011

Detail: (31 pending work orders)

	Due	Task	Asset	Property	Standard	Priority	Shutdown
▶	5/26/2009	CCTV PM, Annual (Region 2)	Camera, I-5 SB @ McVay Hwy Jct, Hwy1, MP190.94	Region 2	1.00	2	<input type="checkbox"/>
	5/26/2009	CCTV PM, Annual (Region 2)	Camera, I-5 NB @ N Albany, Hwy1, MP236.78	Region 2	1.00	2	<input type="checkbox"/>
	5/26/2009	CCTV PM, Annual (Region 2)	Camera, I-5 NB @ State St, Hwy1, MP254.9	Region 2	1.00	2	<input type="checkbox"/>
	5/25/2010	CCTV PM, Annual (Region 2)	Camera, I-5 NB @ State St, Hwy1, MP254.9	Region 2	1.00	2	<input type="checkbox"/>
	5/25/2010	CCTV PM, Annual (Region 2)	Camera, I-5 NB @ N Albany, Hwy1, MP236.78	Region 2	1.00	2	<input type="checkbox"/>
	5/25/2010	CCTV PM, Annual (Region 2)	Camera, I-5 SB @ Portland Rd, Hwy1, MP258.63	Region 2	1.00	2	<input type="checkbox"/>
	5/25/2010	CCTV PM, Annual (Region 2)	Camera, I-5 NB @ Enchanted Way, Hwy1, MP247	Region 2	1.00	2	<input type="checkbox"/>
	5/25/2010	CCTV PM, Annual (Region 2)	Camera, I-5 NB @ Lake Creek, Hwy1, MP214.51	Region 2	1.00	2	<input type="checkbox"/>
	5/25/2010	CCTV PM, Annual (Region 2)	Camera, I-5 NB @ Perkins, Hwy1, MP261.88	Region 2	1.00	2	<input type="checkbox"/>
	5/25/2010	CCTV PM, Annual (Region 2)	Camera, I-5 SB @ Arndt, Hwy1, MP280.44	Region 2	1.00	2	<input type="checkbox"/>
	5/25/2010	CCTV PM, Annual (Region 2)	Camera, I-5 SB @ Kuebler, Hwy1, MP252.3	Region 2	1.00	2	<input type="checkbox"/>
	5/25/2010	CCTV PM, Annual (Region 2)	Camera, I-5 SB @ Mission (OR22), Hwy1, MP253	Region 2	1.00	2	<input type="checkbox"/>
	5/25/2010	CCTV PM, Annual (Region 2)	Camera, OR22 EB @ Detroit South, Hwy162, MP51.3	Region 2	1.00	2	<input type="checkbox"/>
	5/25/2010	CCTV PM, Annual (Region 2)	Camera, OR18 WB @ Murphy Hill, Hwy39, MP15.4	Region 2	1.00	2	<input type="checkbox"/>
	5/25/2010	CCTV PM, Annual (Region 2)	Camera, OR18 WB @ Valley Junction, Hwy39, MP23.6	Region 2	1.00	2	<input type="checkbox"/>
	5/25/2010	CCTV PM, Annual (Region 2)	Camera, OR58 WB @ Willamette Pass, Hwy18, MP62.3	Region 2	1.00	2	<input type="checkbox"/>
	5/25/2010	CCTV PM, Annual (Region 2)	Camera, U5101 @ Cape Cove, Hwy9, MP178.5	Region 2	1.00	2	<input type="checkbox"/>
	5/25/2010	CCTV PM, Annual (Region 2)	Camera, U5101 NB @ Logan Rd, Hwy9, MP112.78	Region 2	1.00	2	<input type="checkbox"/>
	5/25/2010	CCTV PM, Annual (Region 2)	Camera, U5101 @ Astoria-Megler North, Hwy9, MP2	Region 2	1.00	2	<input type="checkbox"/>
	5/25/2010	CCTV PM, Annual (Region 2)	Camera, U5101 @ Astoria-Megler MidSpn, Hwy9, MP3.7	Region 2	1.00	2	<input type="checkbox"/>
	5/25/2010	CCTV PM, Annual (Region 2)	Camera, U5101 @ Astoria-Megler South, Hwy9, MP4.9	Region 2	1.00	2	<input type="checkbox"/>
	5/25/2010	CCTV PM, Annual (Region 2)	Camera, U5101 SB @ Yaquina Bridge, Hwy9, MP141.67	Region 2	1.00	2	<input type="checkbox"/>
	5/25/2010	CCTV PM, Annual (Region 2)	Camera, U5101 SB @ Seaside, Hwy9, MP23.17	Region 2	1.00	2	<input type="checkbox"/>
	5/25/2010	CCTV PM, Annual (Region 2)	Camera, U520 EB @ Santiam Pass, Hwy16, MP80.16	Region 2	1.00	2	<input type="checkbox"/>
	5/25/2010	CCTV PM, Annual (Region 2)	Camera, U520 EB @ Tombstone Summit, Hwy16, MP63.1	Region 2	1.00	2	<input type="checkbox"/>
	5/25/2010	CCTV PM, Annual (Region 2)	Camera, I-5 NB @ Portland Rd, Hwy1, MP258.63	Region 2	1.00	2	<input type="checkbox"/>
	5/25/2010	CCTV PM, Annual (Region 2)	Camera, U5101 SB @ Logan Rd, Hwy9, MP112.78	Region 2	1.00	2	<input type="checkbox"/>
	5/25/2010	CCTV PM, Annual (Region 2)	Camera, OR126W WB @ Cushman Flood, Hwy62, MP3.1	Region 2	1.00	2	<input type="checkbox"/>
	5/25/2010	CCTV PM, Annual (Region 2)	Camera, I-5 NB @ Dillard Access Rd, Hwy1, MP186.84	Region 2	1.00	2	<input type="checkbox"/>
	5/25/2010	CCTV PM, Annual (Region 2)	Camera, OR569 EB @ NW Expressway, Hwy69, MP7.65	Region 2	1.00	2	<input type="checkbox"/>
	5/25/2010	CCTV PM, Annual (Region 2)	Camera, I-5 SB @ McVay Hwy Jct, Hwy1, MP190.94	Region 2	1.00	2	<input type="checkbox"/>

Record: 1 of 31

Set task scheduling options. NUM



Xm Reports



xmREPORT - [Reports]

File Edit View Tools Exit

Updated 12/11/09 **XmReports** Version 1.6

Reports Filters Batch

Select a Group

- All
- Assets**
- Failures
- Management
- Work Orders

Next step

Report grouping

Reports to run

Date range for report data

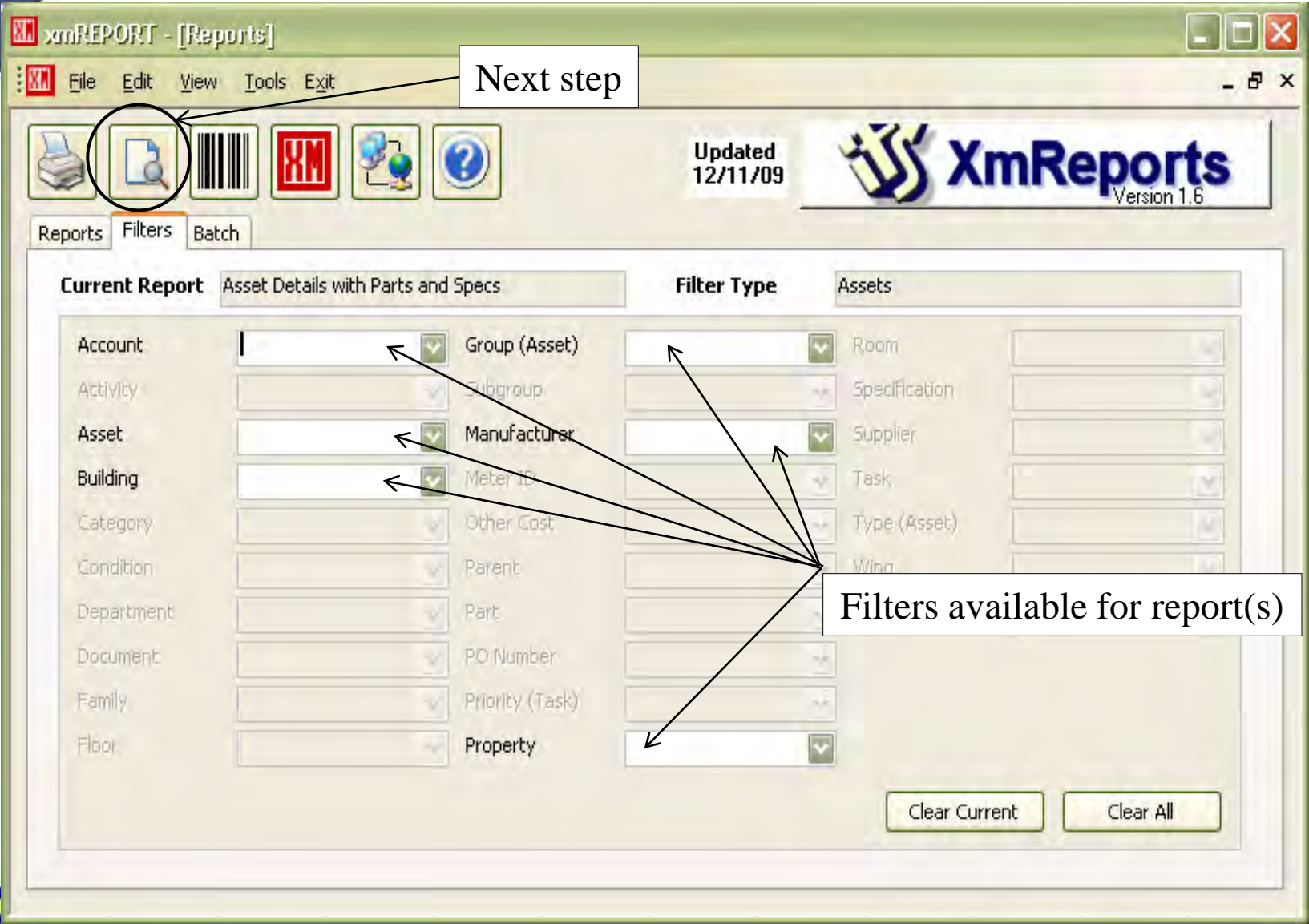
Name

- Asset Details
- Asset Details with Parts and Specs**
- Asset Details with Parts and Specs on PM completed - ISD630
- Asset Details With Serial Number
- Asset History Summary All
- Asset Phone#
- Asset Replacement Projection
- Asset Scrap
- Asset Summary
- Asset Warranties
- Assets and Associated Contacts
- Assets and Associated Regulatory Agencies
- Assets by Control Number

ODOT-This report list Assets with associated parts. Also includes Asset specs such as IP address, Phone#, etc ONLY DISPLAYS ASSETS THAT HAVE PARTS ATTACHED TO IT.

Date from 5/17/2009 to 5/17/2010

Add Remove



Next step

Filters available for report(s)

ODOT Intelligent Transportation Systems
 355 Capitol St
 Salem, Oregon
 Phone: Fax:

XmReports

ODOT-This report list Assets with associated parts. Also includes Asset specs such as IP address, Phone#, etc ONLY DISPLAYS ASSETS THAT HAVE PARTS ATTACHED TO IT.

Asset Details with Parts and Specifications

Filter: Property = "Region 5"

Region/Asset
Region 5

Beacon 01, Boardman HAR, I-84EB, MP156.66

Latitude:		EA	B5378298-201-L17
Longitude:		Model Number:	PC900
Manufacturer:	Highway Informatio	Bar Code	
DateInstall:		SerialNumber:	

Specifications

Digi ESN	6087C22C
ESN	6087C22C
Firm ware Version	2.8.1.8
IP	166.154.10.200
IP Iboot	192.168.1.101
IP Verizon	166.154.10.200
MAC address	00:40:9D:3B:67:22
MDN	5032780283
MIN	5037291010
Verizon Acct Number	270257816-00005

Parts	Comments	QTY
HAR, Flasher		1
Network, Cellular Router, Digi Conned Port VPN		1
Power Supply, DC to DC		1
Power, Battery, 12volt DC, Gel Cell, 180ah		1
Power, Remote Reset, Iboot	Iboot IP 192.168.1.101	1

Beacon 01, La Grande HAR, I-84WB, MP267

Latitude:	45.26131	EA	M6314407/725-L18
Longitude:	-118.02402	Model Number:	PC1000
Manufacturer:	Highway Informatio	Bar Code	
DateInstall:	11/7/2007	SerialNumber:	

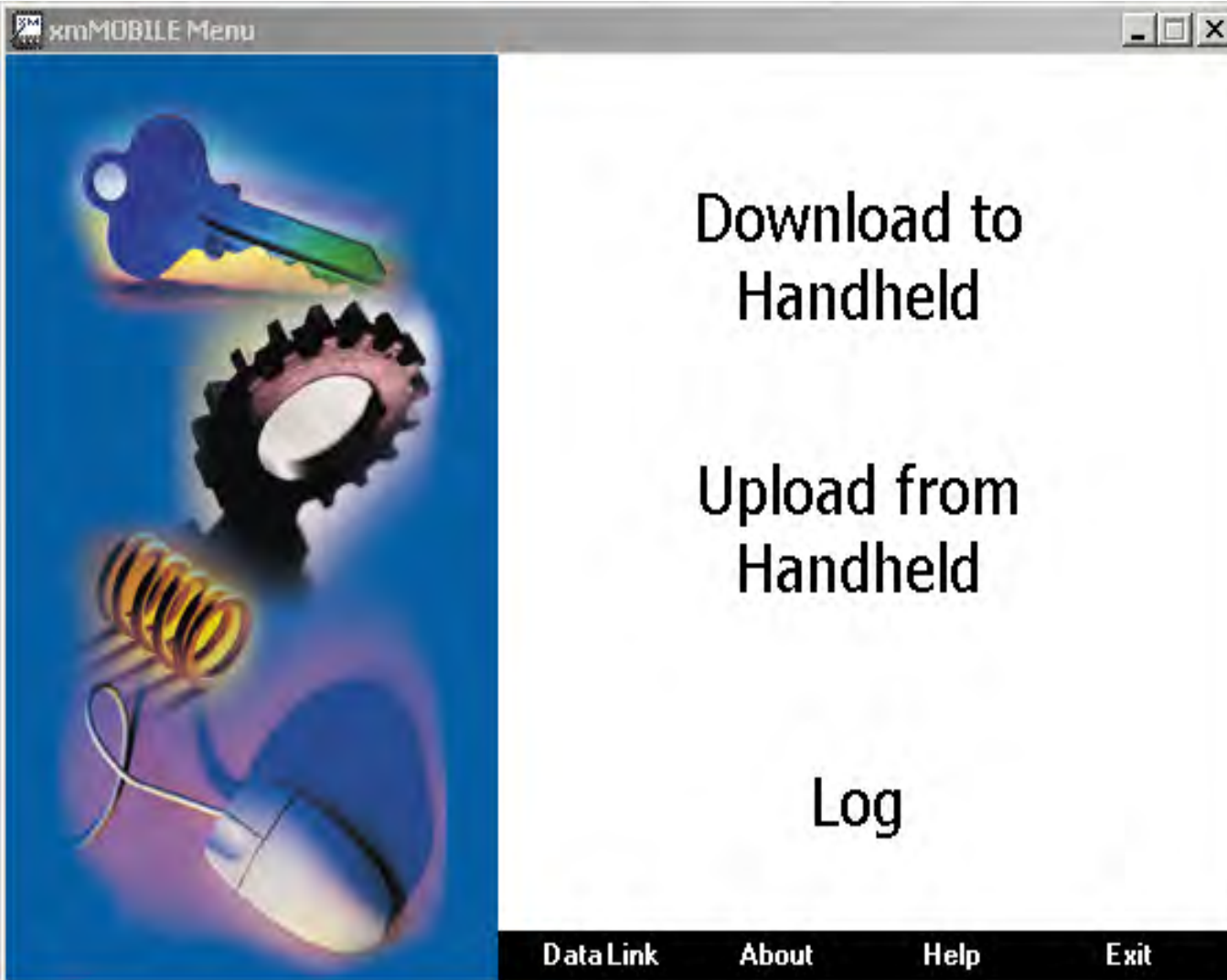
Specifications

Digi ESN	60874EE8
ESN	60874FF8

Can export reports

Xm Mobile





Windows CE



Service: Emergency Repair

Property: Region 4

Asset: Camera, US 20 WB @ Sister

Status: Open

Location:

0 Due 3/16/2006

OK Cancel

Work Order	Details	Description	Comments
Work Order			



Xm Web

ODOT has heavily modified the XmWeb interface. It's now the primary interface used by technicians and dispatch operators for:

- Work Requests and Assignments
- Repair and Maintenance Documentation
- Asset Inventory Management
- After Hours Communications and Notification



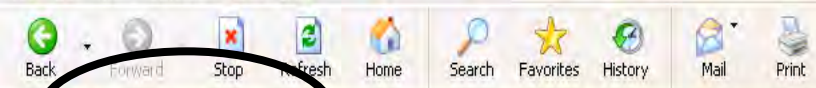
XmWeb Work Requests

- Create Work Requests
- Edit Work Requests
- Search Work Requests for Status
- Labor Entry



Live Demo XmWeb Work Requests





Address http://micromain/WRnew.aspx

Links Bing Google iLink ODOT ODOT Intranet Oregon.Gov TripCheck Verizon Login xmWEB xmWEB DEVL xmWEB TEST Traffic_Wiki ITS Wiki



Easy to find: http://micromain

- New Work Request
- Work Request Status
- Assets
- Events
- Help

New Work Request

Property: Region 1

Asset: VMS, I-84 EB @ 50th, Hwy2, MP3.16

Service: Repair [Other]

Location: []

Description: []

Requester Name: ODOT\jsd100

Phone: 503-932-2274

Requester Email: jason.p.shaddix@odot.state.or.

Send email when WO is closed.

[Create Request]

System login auto populates

Cookies

Check to get an email when the work request is completed



- New Work Request
- Work Request Status
- Assets
- Events
- Help

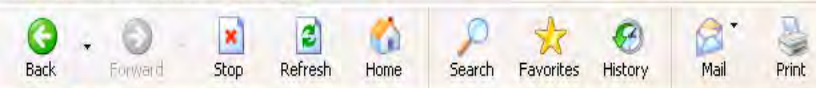
New Work Request

Property	Unknown
Asset	Unknown
Service	Administration
Location	Central Systems
Description	Current Construction Projects
Requester Name	ITS Servers
Phone	Region 1
Requester Email	Region 2

Send email when WO is closed.

Create Request

Select property



- New Work Request
- Work Request Status
- Assets
- Events
- Help

New Work Request

Property Region 1

Asset VMS, I-84 EB @ 50th, Hwy2, MP3.16

Service Repair

Location

Description

Requester Name ODOT\jsd100

Phone 503-932-2274

Requester Email jason.p.shaddix@odot.state.or.

Send email when WO is closed.

Select asset



Work Request
Request Status
ts
ts

New Work Request

Property

Asset

Service

Location

Description

Requester Name

Phone

Requester Email

- Camera, OR217 @ Walker, CAM38
- Camera, OR224 WB @ OR213, Hwy171, MF
- Camera, OR99W @ Bertha, CAM43
- Camera, US26 @ 185th, CAM152
- Camera, US26 @ Bethany, CAM91
- Camera, US26 @ Brightwood Scales, Hwy2
- Camera, US26 @ Camelot, CAM88
- Camera, US26 @ Cedar Hills, CAM150
- Camera, US26 @ Cornelius Pass, CAM153
- Camera, US26 @ Helvetia, CAM154
- Camera, US26 @ Jefferson, CAM92
- Camera, US26 @ Milwaukie, CAM52
- Camera, US26 @ Murray, CAM90
- Camera, US26 @ ORE217, CAM89
- Camera, US26 @ Quartz Creek, CAM123
- Camera, US26 @ Ross Island Bridge East E
- Camera, US26 @ STCG, CAM45
- Camera, US26 @ Sylvan, CAM106
- Camera, US26 @ Vista Ridge Tunnel East,
- Camera, US26 @ Vista Ridge Tunnel, CAM
- Camera, US26 @ Vista Ridge Tunnel, CAM
- Camera, US26 @ Vista Ridge Tunnel, CAM
- Camera, US26 @ Vista Ridge Tunnel, CAM
- Camera, US26 @ Washington PK, CAM151
- Camera, US26 @ Zoo Bridge, Hwy47, MP7:
- Camera, US26 EB @ Government Camp S,
- City of Portland Comm Infrastructure
- Comm Infrastructure, ODOT
- Foster @ 82nd
- Glisan @ OR 213

Very long asset names

Location

Description

Requester Name: ODOT\isd100

Phone: 503-932-2274

Requester Email

Send email when WO is closed.

Create Request



Intelligent Transportation Systems

xmWEB™

Web-based Work Requests

- New Work Request
- Work Request Status
- Assets
- Events
- Help

Hover-over dots for full asset name

New Work Request

Property Region 1

Asset Camera, US26 @ Vista Ridge Tunnel, CAM ...

Service Please Select a Service

Location

Description

Requester Name ODOT\jsd100

Phone 503-932-2274

Requester Email

Send email when WO is closed.

Camera, US26 @ Vista Ridge Tunnel, CAM131

There are already work requests for this asset.

If the problem you are reporting is already in the system, please click Work Order Number below to update it.

If you want to add a new work order, please close this pop-up and continue as usual.

Results 1 - 2

Close

Number	Asset	Service	Description	Status
14885	RWIS, I-205 NB @ Glenn Jackson Br, Hwy64, MP26.4	Annual PM, RWIS, 10/15/2010	Autogenerated annual RWIS PM.	Requested
13602	RWIS, I-205 NB @ Glenn Jackson Br, Hwy64, MP26.4	RFW	No com	Open

New Work Request

Property: Region 1

Asset: RWIS, I-205 NB @ Glenn Jackson Br, Hwy ...

Service: Please Select a Service

Location:

Description:

Requester Name: ODOT\isd100

Phone: 503-932-2274

Requester Email:

Send email when WO is closed.

Already 2 work requests in the system



Intelligent Transportation Systems

xmWEB™

Web-based Work Requests

- New Work Request
- Work Request Status
- Assets
- Events
- Help

New Work Request

Property	Region 1
Asset	Camera, US26 @ Vista Ridge Tunnel, CAM
Service	Please Select a Service <input type="button" value="Other"/>
Location	Please Select a Service
Description	Emergency Request Repair RFW
Requester Name	ODOT\jrd100
Phone	503-932-2274
Requester Email	
	<input type="checkbox"/> Send email when WO is closed.
	<input type="button" value="Create Request"/>

Select service

xmWEB | Emergency Request - Microsoft Internet Explorer

You have selected "Emergency Request".

This WILL page after hours ITS Support.

Please ensure the system or device is supported and call out is approved.

Click the link below to review the SOG.

[ITS SOG](#)

Close

Standard Operating Guideline includes supported systems and process

Emergency request pages support personnel

Property: Region 1

Asset: RWIS, I-205 NB @ Glenn Jackson Br, Hwy ...

Service: Emergency Request

Location: [Empty]

Description: [Empty]

Requester Name: ODOT\isd100

Phone: 503-932-2274

Requester Email: [Empty]

Send email when WO is closed.

Create Request



Intelligent Transportation Systems

xmWEBTM

Web-based Work Requests

New Work Request

Work Request Status

Assets

Events

Help

New Work Request

Property Region 1

Asset RWIS, I-205 NB @ Glenn Jackson Br, Hwy ...

Service Emergency Request Other

Location NB Shoulder

Description Description of work here.

Requester Name ODOT\jsd100

Phone 503-932-2274

Requester Email jason.p.shaddix@odot.state.or.

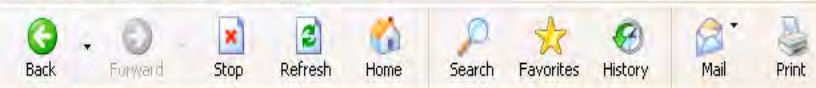
Send email when WO is closed.

Create Request

This request will:

- Send out a notification email (all requests do this)
- Text message on-call staff because emergency was selected
- Email the requester when completed because the box was checked

Submits work request



Address http://micromain/WRstatus.aspx

Links Bing Google iLinc ODOT ODOT Intranet Oregon.Gov TripCheck Verizon Login xmWEB xmWEB DEVL xmWEB TEST Traffic_Wiki ITS Wiki



Intelligent Transportation Systems

xmWEBTM

Web-based Work Requests

- New Work Request
- Work Request Status**
- Assets
- Events
- Help

Brings you to this screen

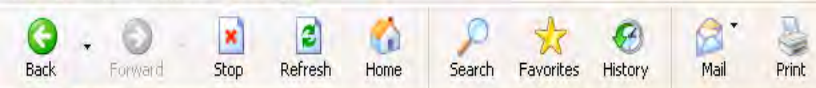
Work Request Status

Property	Region 1	▼
Asset	All	▼
Status	All	▼
Labor		▼
WO#	<input type="text"/>	

Show Request Refresh

Cumulative filters

If you know the Work Order Number you want status on



Intelligent Transportation Systems

xmWEB™

Web-based Work Requests

- New Work Request
- Work Request Status
- Assets
- Events
- Help

Work Request Status

Property	All
Asset	All
Status	Administration
Labor	Central Systems
WO#	Current Construction Projects
	ITS Servers
	Region 1
	Region 2
	Region 3
	Region 4
	Region 5
	Traffic Signals Region 1
	Traffic Signals Region 2
	Traffic Signals Region 3
	Traffic Signals Region 4
	Traffic Signals Region 5

Show Request

Search by property



Intelligent Transportation Systems

xmWEBTM

Web-based Work Requests

- New Work Request
- Work Request Status
- Assets
- Events
- Help

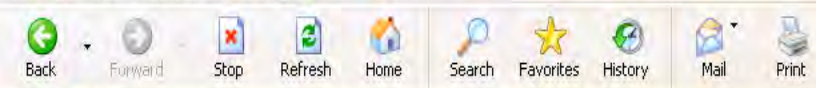
Work Request Status

Property	ITS Servers
Asset	All
Status	All
Labor	SDC
WO#	Server, d-salemtoc-1 Server, dw-salemtoc-1 Server, fr-salemtoc-1 Server, s-bendtoc-1 Server, s-bendtoc-2 Server, s-cpointtoc-1 Server, s-cpointtoc-3 Server, sc-reg1tmoc-151 Server, sc-reg1tmoc-152 Server, sc-reg1tmoc-153 Server, sc-salemtoc-1 Server, sc-salemtoc-152 Server, sc-salemtoc-2 Server, s-reg1hqtoc-1 Server, s-reg1hqtoc-3 Server, s-reg1hqtoc-5 Server, s-reg1hqtoc-6 Server, s-reg1toc-1a Server, s-reg4hqtoc-1 Server, s-reg4toc-115 Server, s-reg4toc-127 Server, s-reg4toc-154 Server, s-reg5hqtoc-1 Server, s-salemrev-100, SDC Server, s-salemrev-55 Server, s-salemrev-84, SDC

Show Request

Search by assets are limited to those in the selected property





Intelligent Transportation Systems

xmWEBTM

Web-based Work Requests

- New Work Request
- Work Request Status
- Assets
- Events
- Help

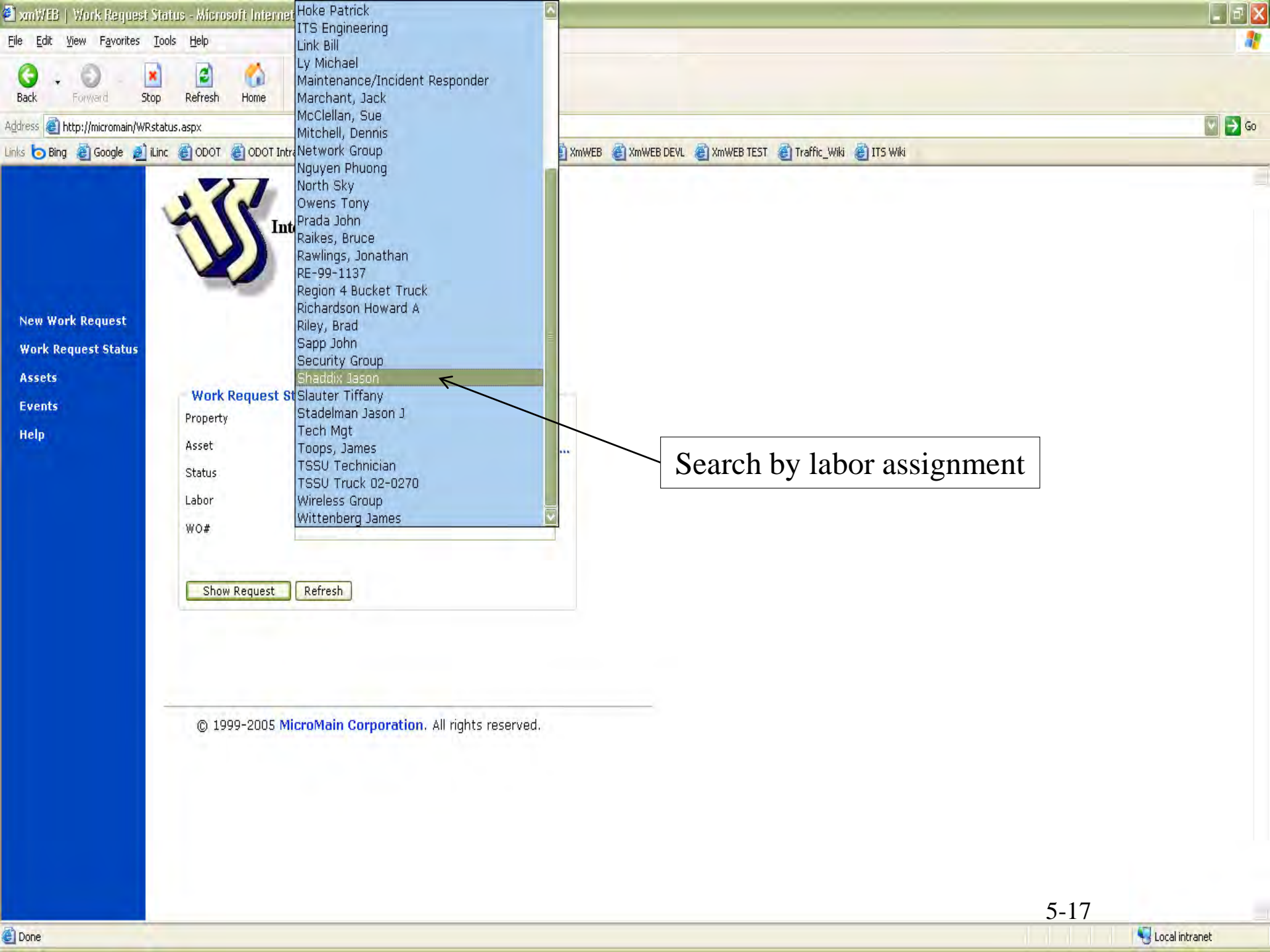
Work Request Status

Property	All	▼
Asset	All	▼ ...
Status	All	▼
Labor	All	▼
WO#	<ul style="list-style-type: none"> Canceled Completed Hold Open and Requested Open and Requested and Hold 	▼

Show Request Refresh

Search by work request status





- Hoke Patrick
- ITS Engineering
- Link Bill
- Ly Michael
- Maintenance/Incident Responder
- Marchant, Jack
- McClellan, Sue
- Mitchell, Dennis
- Network Group
- Nguyen Phuong
- North Sky
- Owens Tony
- Prada John
- Raikes, Bruce
- Rawlings, Jonathan
- RE-99-1137
- Region 4 Bucket Truck
- Richardson Howard A
- Riley, Brad
- Sapp John
- Security Group
- Shaddix Jason
- Slauter Tiffany
- Stadelman Jason J
- Tech Mgt
- Toops, James
- TSSU Technician
- TSSU Truck 02-0270
- Wireless Group
- Wittenberg James

Search by labor assignment



Intelligent Transportation Systems

xmWEBTM

Web-based Work Requests

Sort-able column headers

[Return to the status request page.](#)Click [Work Order Number](#) for Details.

Results 1 - 367

Number	Urgency	Priority	Asset	Service	Description	Status	Due	Requester	Comments
15188	Medium	High	Region 1 General ITS	RFW	Help Floyd with video/Coax connections. Please arrange to meet him and go over what we use.	Open	5/9/2010	ODOT\jds100	Updated 5/4/2010 1:18 PM by ODOT\hwye76g; JT talked with Floyd ordered 250' of 5 wire for Astoria ...
15186	Medium	Low	Camera, I-5 Interstate Bridge, NB	RFW	Camera repair, image box	Hold	5/9/2010	ODOT\hwye76g	Updated 5/4/2010 7:27 AM by ODOT\hwye76g; Changed status to 'Hold'. Updated 5/4/2010 7:19 AM by...
15184	Medium	High	Region 1 General ITS	RFW	ITS General time for May 2010	Hold	5/9/2010	ODOT\hwye09e	Updated 5/4/2010 7:06 AM by ODOT\hwye09e; Changed status to 'Hold'. Updated 5/4/2010 7:06 AM by...
15178	Medium	High	Region 1 General ITS	RFW	Stadelman Reg.1 gen for May	Open	5/8/2010	ODOT\hwye70a	Updated 5/3/2010 11:34 AM by ODOT\hwye70a; Changed status to 'Open'. Original Comments:
15174	Medium	High	VMS, I-5 SB @ Terwilliger, Hwy1, MP298	RFW	comm Loss	Open	5/8/2010	ODOT\hwye70a	Updated 5/3/2010 10:37 AM by ODOT\hwye70a; Changed status to 'Open'. Original Comments:
15171	Medium	High	Comm Infrastructure, ODOT	RFW	Digitize Orion Drawings to CADD	Open	5/8/2010	ODOT\jds626	Updated 5/3/2010 9:45 AM by ODOT\jds626; Digitize Drawings Updated 5/3/2010 9:45 AM by



Intelligent Transportation Systems

xmWEBTM

Web-based Work Requests

[New Work Request](#)[Work Request Status](#)[Assets](#)[Events](#)[Help](#)[Return to the status request page.](#)

Click Work Order Number for Details.

Click to edit work request

Results 1 - 367

Number	Urgency	Priority	Asset	Service	Description	Status	Due	Requester	Comments
15188	Medium	High	Region 1 General ITS	RFW	Help Floyd with video/Coax connections. Please arrange to meet him and go over what we use.	Open	5/9/2010	ODOT\jsd100	Updated 5/4/2010 1:18 PM by ODOT\hwye76g; JT talked with Floyd ordered 250' of 5 wire for Astoria ...
15186	Medium	Low	Camera, I-5 Interstate Bridge, NB	RFW	Camera repair, image box	Hold	5/9/2010	ODOT\hwye76g	Updated 5/4/2010 7:27 AM by ODOT\hwye76g; Changed status to 'Hold'. Updated 5/4/2010 7:19 AM by...
15184	Medium	High	Region 1 General ITS	RFW	ITS General time for May 2010	Hold	5/9/2010	ODOT\hwye09e	Updated 5/4/2010 7:06 AM by ODOT\hwye09e; Changed status to 'Hold'. Updated 5/4/2010 7:06 AM by...
15178	Medium	High	Region 1 General ITS	RFW	Stadelman Reg.1 gen for May	Open	5/8/2010	ODOT\hwye70a	Updated 5/3/2010 11:34 AM by ODOT\hwye70a; Changed status to 'Open'. Original Comments:
15174	Medium	High	VMS, I-5 SB @ Terwilliger, Hwy1, MP298	RFW	comm Loss	Open	5/8/2010	ODOT\hwye70a	Updated 5/3/2010 10:37 AM by ODOT\hwye70a; Changed status to 'Open'. Original Comments:
15171	Medium	High	Comm Infrastructure, ODOT	RFW	Digitize Orion Drawings to CADD	Open	5/8/2010	ODOT\jsd626	Updated 5/3/2010 9:45 AM by ODOT\jsd626; Digitize Drawings Updated 5/3/2010 9:45 AM by

Work Request Details

Printer Friendly

WO Number: 15188

Service: RFW

Description: Help Floyd with video/Coax connections. Please arrange to meet him and go over what we use.

Property: Region 1

Asset: Region 1 General ITS

Shop: Region 1 ITS | Adams Patrick J

Location: Barlow/Lawnfield

Status: Open

Substatus:

Due: 5/9/2010

Urgency: 2 - Medium

Requester: ODOT\jrd100

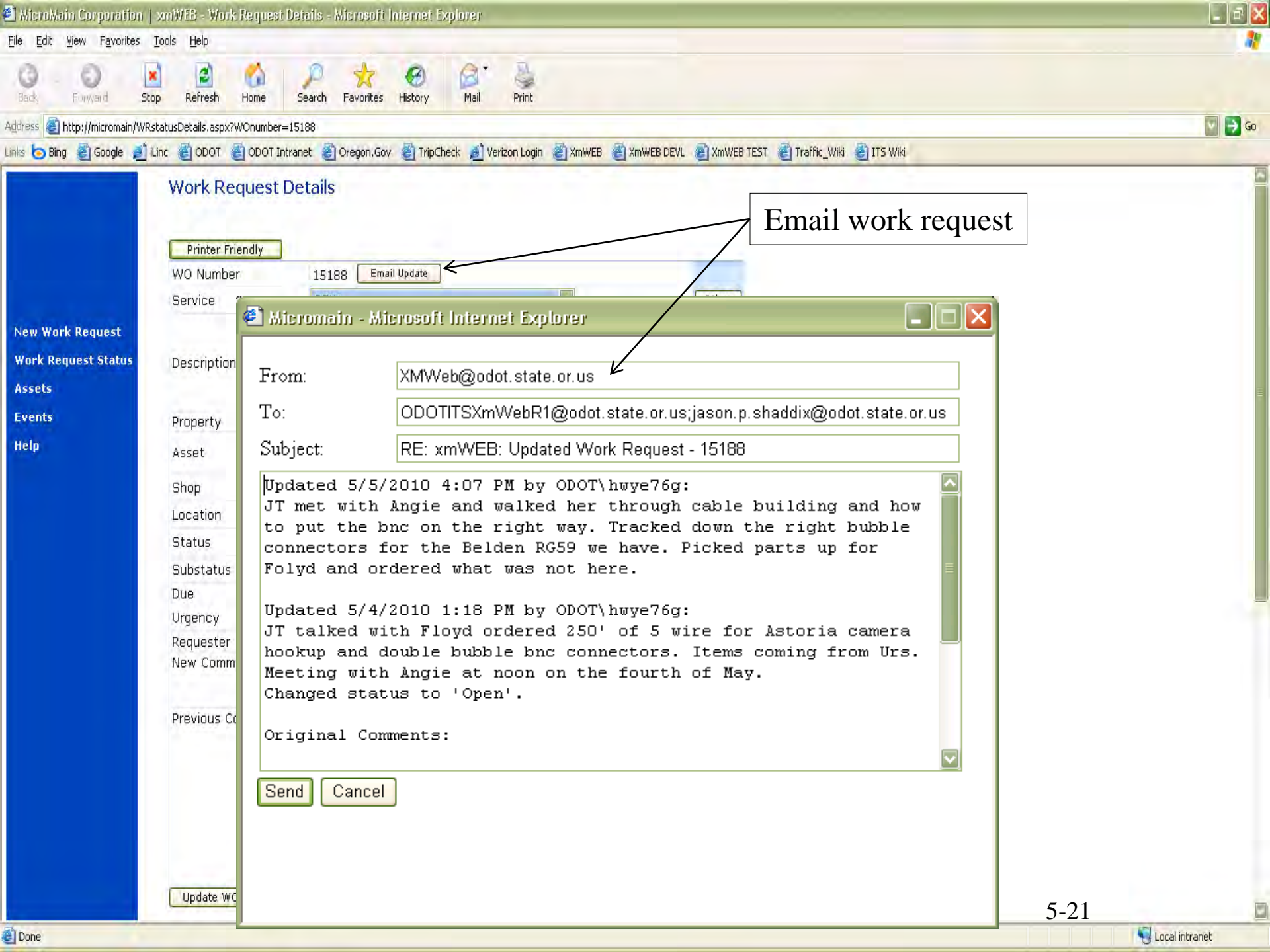
New Comments:

Previous Comments: Updated 5/4/2010 1:18 PM by ODOT\hwe76g: JT talked with Floyd ordered 250' of 5 wire for Astoria camera hookup and double bubble bnc connectors. Items coming from Urs. Meeting with Angie at noon on the fourth of May. Changed status to 'Open'.
Original Comments:

Asset can be changed

Technicians update as work progresses

Newest comments append at the top



Work Request Details

Printer Friendly

WO Number 15188

Service

Description

From: XMWeb@odot.state.or.us

Property

To: ODOTITSxmWebR1@odot.state.or.us;jason.p.shaddix@odot.state.or.us

Asset

Subject: RE: xmWEB: Updated Work Request - 15188

Shop

Updated 5/5/2010 4:07 PM by ODOT\hwe76g:
JT met with Angie and walked her through cable building and how to put the bnc on the right way. Tracked down the right bubble connectors for the Belden RG59 we have. Picked parts up for Folyd and ordered what was not here.

Location

Status

Substatus

Due

Urgency

Requester

New Comm

Updated 5/4/2010 1:18 PM by ODOT\hwe76g:
JT talked with Floyd ordered 250' of 5 wire for Astoria camera hookup and double bubble bnc connectors. Items coming from Urs. Meeting with Angie at noon on the fourth of May. Changed status to 'Open'.
Original Comments:

Previous Co

Email work request

Work Request Details

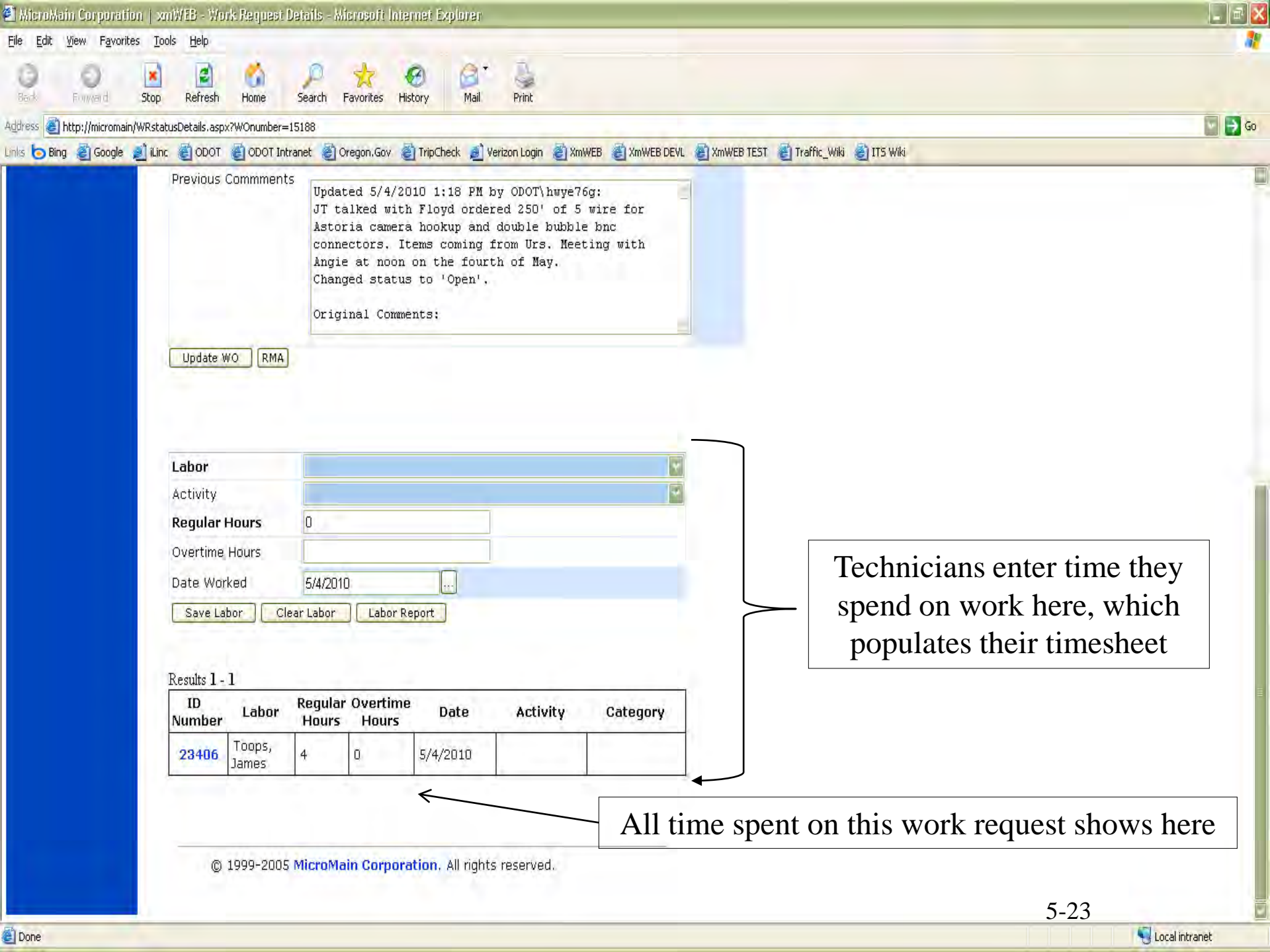
Printer Friendly

WO Number	14943	Email Update
Service	Annual PM, RWIS, 10/15/2010	Back
Description	Autogenerated annual RWIS PM.	
Property	Region 1	
Asset	RWIS, US26 WB @ Quartz Creek, Hwy47, ...	
Shop	Please Select a Shop	
Location	Please Select a Shop	
Status	Central Systems Hoke Patrick	
Substatus	Network Network Group	
Due	Region 1 Electrical Sapp John	
Urgency	Region 1 ITS Adams Patrick J	
Requester	Region 1 Traffic Anderson Doug B	
New Comments	Region 2 ITS Owens Tony	
Previous Comments	Region 3 ITS Brock Joel L	
	Region 4 ITS Wittenberg James	
	Region 5 ITS Richardson Howard A	
	TSSU Link Bill	

Responsibility for the work request is set here



Update WO RMA Inspection Points



Previous Comments

Updated 5/4/2010 1:18 PM by ODOT\hwye76g:
 JT talked with Floyd ordered 250' of 5 wire for Astoria camera hookup and double bubble bnc connectors. Items coming from Urs. Meeting with Angie at noon on the fourth of May. Changed status to 'Open'.

Original Comments:

Update WO RMA

Labor [dropdown]

Activity [dropdown]

Regular Hours

Overtime Hours

Date Worked

Save Labor Clear Labor Labor Report

Technicians enter time they spend on work here, which populates their timesheet

Results 1 - 1

ID Number	Labor	Regular Hours	Overtime Hours	Date	Activity	Category
23406	Toops, James	4	0	5/4/2010		

All time spent on this work request shows here

Work Request Details

Printer Friendly

WO Number 14943 [Email Update](#)

Service Annual PM, RWIS, 10/15/2010 [Back](#)

Description Autogenerated annual RWIS PM.

Property Region 1

Asset RWIS, US26 WB @ Quartz Creek, Hwy47, ...

Shop Please Select a Shop

Location Hwy 47, MP 24.23

Status Requested

Substatus

Due 10/15/2010

Urgency 2 - Medium

Requester

New Comments

Previous Comments

[Update WO](#) [RMA](#) [Inspection Points](#)

Used when a part needs to be returned for repair

Only shows up if the work request is a scheduled preventative maintenance task

- New Work Request
- Work Request Status
- Assets
- Events
- Help



Intelligent Transportation Systems

xmWEB
Web-based Work Requests

- New Work Request
- Work Request Status
- Assets
- Events
- Help

Inspection Points

Save Create Work Orders

New work request is created that includes all inspection points with "Assign WO" checked

WO# would appear here if assigned

Inspection Point	Fail	Rating 1-4	Measurement	Assign WO	WO Number	Corrective Action	Comments
Anemometer -Validate speed	<input type="checkbox"/>	<input type="checkbox"/>	<input type="checkbox"/>	<input checked="" type="checkbox"/>		Check that wind speed and direction are changing with the conditions. Test if necessary.	Check that wind speed and direction are changing with the conditions.
Asset Condition - Cabinet	<input type="checkbox"/>	<input type="checkbox"/>	<input type="checkbox"/>	<input type="checkbox"/>		Asset Condition: 1=Good;2=Fair;3=Poor;4=Critical	Ensure cabinet is in good condition, any rust is under control, and grafitti is painted over
Asset Condition - Electronic Components	<input type="checkbox"/>	<input type="checkbox"/>	<input type="checkbox"/>	<input type="checkbox"/>		Asset Condition: 1=Good;2=Fair;3=Poor;4=Critical	Observe all control equipment operation.
Asset Condition -Fence	<input type="checkbox"/>	<input type="checkbox"/>	<input type="checkbox"/>	<input type="checkbox"/>		Asset Condition: 1=Good;2=Fair;3=Poor;4=Critical	Check for damage or future problems such as vegetation growing through fabric
Asset Condition - Jboxes	<input type="checkbox"/>	<input type="checkbox"/>	<input type="checkbox"/>	<input type="checkbox"/>		Asset Condition: 1=Good;2=Fair;3=Poor;4=Critical	Check boxes for proper bonding, conduit seal, and pest infestation
Asset Condition - Obsolescence	<input type="checkbox"/>	<input type="checkbox"/>	<input type="checkbox"/>	<input type="checkbox"/>		Asset Condition: 1=Good;2=Fair;3=Poor;4=Critical Is the manufacturer still in business?	Is the manufacturer still in business?
Asset Condition -	<input type="checkbox"/>	<input type="checkbox"/>	<input type="checkbox"/>	<input type="checkbox"/>		Asses the overall condition of the	Use to give an estimation of the Asset's overall condition



Intelligent Transportation Systems



Web-based Work Requests

- New Work Request
- Work Request Status
- Assets
- Events
- Help

Inspection Points

Save Create Work Orders

Asset condition rating assessed here

Editable

Inspection Point	Fail	Rating 1-4	Measurement	Assign WO	WO Number	Corrective Action	Comments
Anemometer -Validate speed	<input type="checkbox"/>	<input type="checkbox"/>	<input type="checkbox"/>	<input type="checkbox"/>		Check that wind speed and direction are changing with the conditions. Test if necessary.	Check that wind speed and direction are changing with the conditions.
Asset Condition - Cabinet	<input type="checkbox"/>	<input type="checkbox"/>	<input type="checkbox"/>	<input type="checkbox"/>		Asset Condition: 1=Good;2=Fair;3=Poor;4=Critical	Ensure cabinet is in good condition, any rust is under control, and grafitti is painted over
Asset Condition - Electronic Components	<input type="checkbox"/>	<input type="checkbox"/>	<input type="checkbox"/>	<input type="checkbox"/>		Asset Condition: 1=Good;2=Fair;3=Poor;4=Critical	Observe all control equipment operation.
Asset Condition -Fence	<input type="checkbox"/>	<input type="checkbox"/>	<input type="checkbox"/>	<input type="checkbox"/>		Asset Condition: 1=Good;2=Fair;3=Poor;4=Critical	Check for damage or future problems such as vegetation growing through fabric
Asset Condition - Jboxes	<input type="checkbox"/>	<input type="checkbox"/>	<input type="checkbox"/>	<input type="checkbox"/>		Asset Condition: 1=Good;2=Fair;3=Poor;4=Critical	Check boxes for proper bonding, conduit seal, and pest infestation
Asset Condition - Obsolescence	<input type="checkbox"/>	<input type="checkbox"/>	<input type="checkbox"/>	<input type="checkbox"/>		Asset Condition: 1=Good;2=Fair;3=Poor;4=Critical Is the manufacturer still in business?	Is the manufacturer still in business?
Asset Condition -	<input type="checkbox"/>	<input type="checkbox"/>	<input type="checkbox"/>	<input type="checkbox"/>		Asses the overall condition of the	Use to give an estimation of the Asset's overall condition



Intelligent Transportation Systems

xmWEB™

Web-based Work Requests

- New Work Request
- Work Request Status
- Assets
- Events
- Help

Inspection Points

Save Create Work Orders

Preventative maintenance inspection point failure here

Location for any recorded values, i.e. source voltage

Inspection Point	Fail	Rating 1-4	Measurement	Assign WO	WO Number	Corrective Action	Comments
Anemometer -Validate speed	<input type="checkbox"/>	<input type="checkbox"/>	<input type="checkbox"/>	<input type="checkbox"/>		Check that wind speed and direction are changing with the conditions. Test if necessary.	Check that wind speed and direction are changing with the conditions.
Asset Condition - Cabinet	<input type="checkbox"/>	<input type="checkbox"/>	<input type="checkbox"/>	<input type="checkbox"/>		Asset Condition: 1=Good;2=Fair;3=Poor;4=Critical	Ensure cabinet is in good condition, any rust is under control, and grafitti is painted over
Asset Condition - Electronic Components	<input type="checkbox"/>	<input type="checkbox"/>	<input type="checkbox"/>	<input type="checkbox"/>		Asset Condition: 1=Good;2=Fair;3=Poor;4=Critical	Observe all control equipment operation.
Asset Condition -Fence	<input type="checkbox"/>	<input type="checkbox"/>	<input type="checkbox"/>	<input type="checkbox"/>		Asset Condition: 1=Good;2=Fair;3=Poor;4=Critical	Check for damage or future problems such as vegetation growing through fabric
Asset Condition - Jboxes	<input type="checkbox"/>	<input type="checkbox"/>	<input type="checkbox"/>	<input type="checkbox"/>		Asset Condition: 1=Good;2=Fair;3=Poor;4=Critical	Check boxes for proper bonding, conduit seal, and pest infestation
Asset Condition - Obsolescence	<input type="checkbox"/>	<input type="checkbox"/>	<input type="checkbox"/>	<input type="checkbox"/>		Asset Condition: 1=Good;2=Fair;3=Poor;4=Critical Is the manufacturer still in business?	Is the manufacturer still in business?
Asset Condition -	<input type="checkbox"/>	<input type="checkbox"/>	<input type="checkbox"/>	<input type="checkbox"/>		Asses the overall condition of the	Use to give an estimation of the Asset's overall condition

XmWeb Asset Management

- Create New Assets
- Edit Assets
- Searching for Assets
- Asset Parts
- Asset Specifications



Live Demo XmWeb Assets





Intelligent Transportation Systems

xmWEBTM

Web-based Work Requests

- New Work Request
- Work Request Status
- Assets
- Events
- Help

All Assets.

Click Asset for Details.

Enter Asset:

or Select Asset:

Wild card search of asset name

Click to view asset

Results 1 - 4

Modify Asset	Property	Description	Type
Beacon 01, I-5 SB @ Perkins Rd	Region 2	15 SB just north of Salem	Equipment
Camera, I-5 NB @ Perkins, Hwy1, MP261.88	Region 2	3C003; PTZ Camera Site	Equipment
I-5 @ Perkins	Region 2		Area
VMS, I-5 NB @ Perkins, Hwy1, MP261.88	Region 2	Type 1	Equipment

Click Button To Add New Asset:

Click to create NEW asset



- New Work Request
- Work Request Status
- Assets
- Events
- Help

[Details](#) | [Specifications](#) | [Parts](#) | [Task](#) | [Comments](#) | [Project Info](#)

Active assets show up in all work request drop-downs. Un-checking this will remove the asset from queries, while retaining all the data.

Add Asset

Asset: VMS, I-5 NB @ Perkins, Hwy1, MP261.88

Property: [Dropdown]

Description: Type 1

Parent: [Dropdown]

Asset Priority: High

Seasonal Priority: [Dropdown]

Type: Equipment

Account: M6244436/700-L18

Group: VMS

Sub Group: Type 1

MP: 261.88

Active

Highway: 1

Save Asset

NONE
Drum
Other
Type 1
Type 2
Type 3
Type 4
vms



- New Work Request
- Work Request Status
- Assets
- Events
- Help

Details | Specifications | Parts | Task | Comments | Project Info

Add Asset

Asset: VMS, I-5 NB @ Perkins, Hwy1, MP261.88 Active

Property: Highway: 1

Description: MP: 261.88

Parent: ...

Asset Priority: High

Seasonal Priority:

Type: Equipment ...

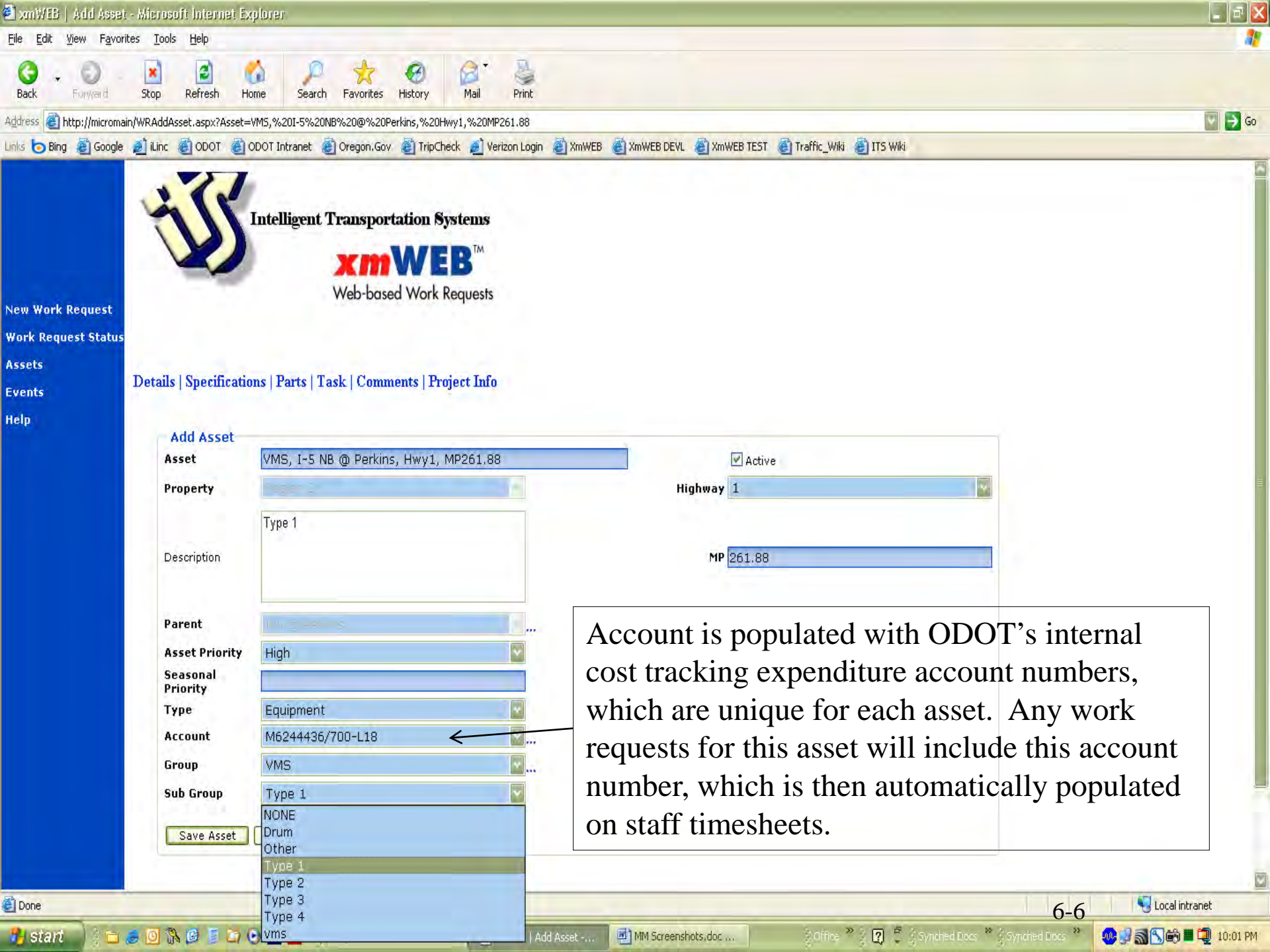
Account: M6244436/700-L18

Group: VMS

Sub Group: Type 1

Parent asset is often an "Area" type asset

Asset type can be Equipment, Area, or Vehicle



- New Work Request
- Work Request Status
- Assets
- Events
- Help

[Details](#) | [Specifications](#) | [Parts](#) | [Task](#) | [Comments](#) | [Project Info](#)

Add Asset

Asset	VMS, I-5 NB @ Perkins, Hwy1, MP261.88	<input checked="" type="checkbox"/> Active
Property		Highway 1
Description	Type 1	MP 261.88
Parent		
Asset Priority	High	
Seasonal Priority		
Type	Equipment	
Account	M6244436/700-L18	
Group	VMS	
Sub Group	Type 1	

Account is populated with ODOT's internal cost tracking expenditure account numbers, which are unique for each asset. Any work requests for this asset will include this account number, which is then automatically populated on staff timesheets.



- New Work Request
- Work Request Status
- Assets
- Events
- Help

[Details](#) | [Specifications](#) | [Parts](#) | [Task](#) | [Comments](#) | [Project Info](#)

Add Asset

Asset Active

Property Highway

Description MP

Parent

Asset Priority

Seasonal Priority

Type

Account

Group

Sub Group

Group is the general classification of the device. Examples: VMS, CCTV, RWIS, HAR, Server



- New Work Request
- Work Request Status
- Assets
- Events
- Help

[Details](#) | [Specifications](#) | [Parts](#) | [Task](#) | [Comments](#) | [Project Info](#)

Add Asset

Asset: VMS, I-5 NB @ Perkins, Hwy1, MP261.88 Active

Property: Highway: 1

Description: Type 1 MP: 261.88

Parent:

Asset Priority: High

Seasonal Priority:

Type: Equipment

Account: M6244436/700-L18

Group: VMS

Sub Group: Type 1

NONE
Drum
Other
Type 1
Type 2
Type 3
Type 4
vms

Sub-Group further classifies the asset. If the Group is VMS, we still need to know what kind of VMS.



- New Work Request
- Work Request Status
- Assets
- Events
- Help

Next screen

[Details](#) | [Specifications](#) | [Parts](#) | [Task](#) | [Comments](#) | [Project Info](#)

Add Asset

Asset	VMS, I-5 NB @ Perkins, Hwy1, MP261.88	<input checked="" type="checkbox"/> Active
Property		Highway 1
Description	Type 1	MP 261.88
Parent		
Asset Priority	High	
Seasonal Priority		
Type	Equipment	
Account	M6244436/700-L18	
Group	VMS	
Sub Group	Type 1	

Save Asset

- NONE
- Drum
- Other
- Type 1
- Type 2
- Type 3
- Type 4
- vms

Seasonal Priority is used for devices such as mountain pass RWIS, that are more important in the winter.



- New Work Request
- Work Request Status
- Assets
- Events
- Help

[Asset](#) | [Specifications](#) | [Parts](#) | [Task](#) | [Comments](#) | [Project Info](#)

Asset Details

Asset: VMS, I-5 NB
@ Perkins, Hwy1,
MP261.88

Key fields

Cost	0.0000	Supplier	US Traffic	<input type="checkbox"/> Track Only	
Install Date	5/1/2004	Manufacturer	US Traffic	Latitude	45.0279001
Last Maintained	6/24/2009	Model Number	VMS-LED-W-CM-3Lx18CH-7x5	Longitude	-122.9840201
Structure No.	19303	Serial Number		Altitude	
Structure Type	Bridge	Control Number	3VM001	Click the button to see the Asset location on Google Maps. Lat/Long units above, should use WGS84 Geo Coordinates.	

Save Asset Details Cancel

Asset tag#



- New Work Request
- Work Request Status
- Assets
- Events
- Help

Last time a preventative maintenance task was performed

Asset | Specifications | Parts | Task | Comments | Project Info

Asset Details

Asset: VMS, I-5 NB
@ Perkins, Hwy1,
MP261.88

Cost	0.0000	Supplier	US Traffic	<input type="checkbox"/> Track Only	
Install Date	5/1/2004	Manufacturer	US Traffic	Latitude	45.0279001
Last Maintained	6/24/2009	Model Number	VMS-LED-W-CM-3Lx18CH-7x9	Longitude	-122.9840201
Structure No.	19303	Serial Number		Altitude	
Structure Type	Bridge	Control Number	3VM001	Click the button to see the Asset location on Google Maps. Lat/Long units above, should use WGS84 Geo Coordinates.	

Save Asset Details Cancel

Structure ID is traceable to bridge inspections

Used to describe they type of bridge, pole, facility



- New Work Request
- Work Request Status
- Assets
- Events
- Help

Asset | Specifications | Parts | Task | Comments | Project Info

Asset Details

Asset: VMS, I-5 NB
@ Perkins, Hwy1,
MP261.88

Cost	0.0000	Supplier	US Traffic	<input type="checkbox"/> Track Only
Install Date	5/1/2004	Manufacturer	US Traffic	Latitude 45.0279001
Last Maintained	6/24/2009	Model Number	VMS-LED-W-CM-3Lx18CH-7x9	Longitude -122.9840201
Structure No.	19303	Serial Number		Altitude
Structure Type	Bridge	Control Number	3VM001	

Click the button to see the Asset location on Google Maps. Lat/Long units above, should use WGS84 Geo Coordinates.



Links to Google Maps, making finding assets much simpler

45.0279001,-122.9840201(Asset: VMS, I-5 NB @ Perkins, Hwy1, MP261.88) - Google Maps - Microsoft Internet...

File Edit View Favorites Tools Help

Address http://maps.google.com/?q=45.0279001,-122.9840201(Asset:%20VMS,%20I-5%20NB%20@%20Perkins,%20Hwy1,%20MP261.88)€

Links Bing Google iLinc ODOT ODOT Intranet Oregon.Gov TripCheck Verizon Login XmWEB

Web Images Videos Maps News Shopping Gmail more

Google maps 45.0279001,-122.9840201(Asset: VMS, I-5 NB @ Perkins, Hwy1, MP261.88) Search Maps

Show search options

Find businesses, addresses and places of interest.

Get Directions My Maps Print Send Link

Asset: VMS, I-5 NB @ Perkins, Hwy1, MP261.88
+45° 1' 40.44", -122° 59' 2.47"

Directions Search nearby Save to... more

Done Internet

MicroMain fills this in, bringing you to Google Maps as seen.

- New Work Request
- Work Request Status
- Assets
- Events
- Help

- only
- 01
- 0201



- New Work Request
- Work Request Status
- Assets
- Events
- Help

Next screen

Asset **Specifications** | Parts | Task | Comments | Project Info

Asset Details

Asset: VMS, I-5 NB
@ Perkins, Hwy1,
MP261.88

Cost	0.0000	Supplier	US Traffic	<input type="checkbox"/> Track Only
Install Date	5/1/2004	Manufacturer	US Traffic	Latitude 45.0279001
Last Maintained	6/24/2009	Model Number	VMS-LED-W-CM-3Lx18CH-7x5	Longitude -122.9840201
Structure No.	19303	Serial Number		Altitude
Structure Type	Bridge	Control Number	3VM001	

Click the button to see the Asset location on Google Maps. Lat/Long units above, should use WGS84 Geo Coordinates.

Save Asset Details Cancel

Value Low

Comments

Asset Specifications

Click here to edit specification

ID	Specification	Value (Text)	Value (Date)	Value	Value Hi	Value Low	Comments
142	Firmware Version	UniCPU	4/29/2006 12:00:00 AM	1.234	0	0	Record Firmware version here
125	IP	167.131.135.133			0	0	Device IP
6086	IP Cellular	10.10.11.3	3/24/2010 12:00:00 AM	0	0	0	Verizon's fixed IP, only pertains to cellular routers
127	IP Subnet Mask	255.255.255.240			0	0	
128	IP Switch	167.131.135.130			0	0	
5604	Sign Contol Software Sign ID	91			0	0	

Specifications are used to track data about the asset or components of the asset.

Search For Specification



- [New Work Request](#)
- [Work Request Status](#)
- [Assets](#)
- [Events](#)
- [Help](#)



Intelligent Transportation Systems

xmWEBTM

Web-based Work Requests

[Asset](#) | [Details](#) | [Parts](#) | [Task](#) | [Comments](#) | [Project Info](#)

New Specification

VMS, I-5 NB @
Perkins, Hwy 1,
MP261.88

Specification	Firmware Version
Value (Text)	UniCPU
Value (Date)	4/29/2006
Value	1.234
Value Hi	0
Value Low	0
Comments	Record Firmware version here

Make any necessary changes, then click Save.

Deletes specification entirely

Asset Specifications



Search For Specification

Wild card search of specification name

Enter
Specification:

or Select
Specification:

Results 1 - 40

Specification	Comments
IP	
IP 2070	
IP Capture Box	
IP DRAC / ILO	IP for DRAC (Dell) or iLo (HP)
IP Encom	
IP Gateway	
IP Gateway 2	
IP Gateway Switch	
IP Iboot	IP for the Iboot that is onsite. Please fill in comments with information on what Iboot can power cycle.
IP MPG4 Reciever	
IP MPG4 Transmitter	
IP Router	
IP RWIS	
IP Subnet Mask	
IP Subnet Mask 2	
IP Subnet Mask Switch	
IP Switch	



- New Work Request
- Work Request Status
- Assets
- Events
- Help

Next screen

Asset | Specifications | **Parts** | Task | Comments | Project Info

Asset Details

Asset: VMS, I-5 NB
@ Perkins, Hwy1,
MP261.88

Cost	0.0000	Supplier	US Traffic	<input type="checkbox"/> Track Only
Install Date	5/1/2004	Manufacturer	US Traffic	Latitude 45.0279001
Last Maintained	6/24/2009	Model Number	VMS-LED-W-CM-3Lx18CH-7x5	Longitude -122.9840201
Structure No.	19303	Serial Number		Altitude
Structure Type	Bridge	Control Number	3VM001	

Click the button to see the Asset location on Google Maps. Lat/Long units above, should use WGS84 Geo Coordinates.

Save Asset Details Cancel

Asset Parts

ID	Part	Description	Qty	Comments
362	Cabinet, 332	Full size Traffic Cabinet	1	
363	Cabinet, 332 Riser	Riser for 332, 334, 336 cabinets	1	
364	Cabinet, Drawer	Rack mount drawer	1	
366	Cabinet, Locks, Best	Cabinet lock w/ Best cylinder	2	Red
367	Cabinet, Log Book	Notebook for cabinet notes	1	
4376	Filter, 12x16x1	Cabinet Filter, Ramp Meter, VMS	1	
5114	Filter, 12x16x1	Cabinet Filter, Ramp Meter, VMS	1	
4377	Filter, 8"x8"x1"	Sign Filter for U.S. Traffic VMS	16	
5164	Filter, 9.5x8x 1	US Traffic VMS Housing Filter	16	
2067	Modem, GDI, SM336, Stand alone	Stand Alone Modem	1	
368	Network, Router, Cisco 2950	Cisco 2950	1	
369	Network, Switch, Cisco 2600	Cisco 2600	1	
388	Power, UPS, Minuteman	UPS	1	
	Surge			

Click here to edit part

All equipment at a site is tracked as a part. This includes electronic equipment, mechanical hardware, consumables, anything that needs to be tracked to an asset.



Search For Parts

Enter Part:

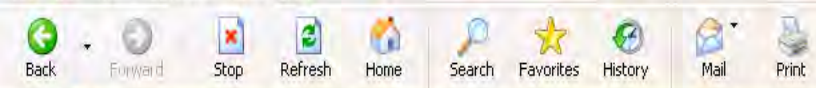
or Select a Part:

Wild card search of parts name

Click here to add part to asset

Parts Results 1 - 30

Part	Description	Location	Class	Manufacturer	MaintenanceCategory
Modem, 21605, US Robotics Traffic	US Robotics 56K Sportster Modem, used in US Traffic VMS	BOM		US Robotics	VMS
Modem, 33.6K, US Robotics	33.6 Kbp modem, white in color	BOM		US Robotics	Modem
Modem, 56K US Robotics	56kbp modem white in color	BOM			Modem
Modem, 56K, 3COM	Stand Alone Modem	TSSU	Modem	3COM	Modem
Modem, 56K, D-Series Modem, DCB	56k baud modem	BOM		DCB	VMS
Modem, ACM 200, Cable Modem	Asynchronous Cable Modem	BOM		ACM	Modem
Modem, Cable Broadband Modem	Comcast Broadband	BOM	Network		Network



Intelligent Transportation Systems

xmWEB™
Web-based Work Requests

- New Work Request
- Work Request Status
- Assets
- Events
- Help

Asset | Details | Specifications | Task | Comments | Project Info

Part
 VMS, I-5 NB @
 Perkins, Hwy 1,
 MP261.88

Part

Description

Quantity

Comments

Fill in Qty and any comments for the parts, then click save

Asset Parts

ID	Part	Description	Qty	Comments
362	Cabinet, 332	Full size Traffic Cabinet	1	
363	Cabinet, 332 Riser	Riser for 332, 334, 336 cabinets	1	
364	Cabinet,	Back mount drawer	1	



- New Work Request
- Work Request Status
- Assets
- Events
- Help

Next screen

[Asset](#) | [Specifications](#) | [Parts](#) | [Task](#) | [Comments](#) | [Project Info](#)

Asset Details
Asset: VMS, I-5 NB
@ Perkins, Hwy1,
MP261.88

Cost	0.0000	Supplier	US Traffic	<input type="checkbox"/> Track Only
Install Date	5/1/2004	Manufacturer	US Traffic	Latitude 45.0279001
Last Maintained	6/24/2009	Model Number	VMS-LED-W-CM-3Lx18CH-7x5	Longitude -122.9840201
Structure No.	19303	Serial Number		Altitude
Structure Type	Bridge	Control Number	3VM001	

Click the button to see the Asset location on Google Maps. Lat/Long units above, should use WGS84 Geo Coordinates.

Save Asset Details Cancel



- New Work Request
- Work Request Status
- Assets
- Events
- Help



Intelligent Transportation Systems
xmWEB™
 Web-based Work Requests

[Asset](#) | [Details](#) | [Specifications](#) | [Parts](#) | [Comments](#) | [Project Info](#)

Task
 VMS, I-5 NB @ Perkins, Hwy1, MP261.88

Task

Type

Priority

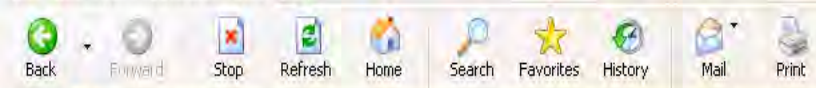
Last Done

Class

Preventative maintenance tasks assigned to this asset

Asset Task

ID	Task	Type	Priority	Last Done	Class
1221	VMS PM, Annual (Region 2)	Preventive		6/24/2009 2:41:24 PM	Minimum Requirement
4154	Annual PM, VMS	Preventive			Minimum Requirement



Address <http://micromain/WRAssetTask.aspx>

Links [Bing](#) [Google](#) [iLinc](#) [ODOT](#) [ODOT Intranet](#) [Oregon.Gov](#) [TripCheck](#) [Verizon Login](#) [xmWEB](#) [xmWEB DEVL](#) [xmWEB TEST](#) [Traffic_Wiki](#) [ITS Wiki](#)

Asset Task

ID	Task	Type	Priority	Last Done	Class
1221	VMS PM, Annual (Region 2)	Preventive		6/24/2009 2:41:24 PM	Minimum Requirement
4154	Annual PM, VMS	Preventive			Minimum Requirement

Search For Task

Enter Task:

or Select Task:

Wild card search for task

Task Results 1 - 1

Task	Class	Type	Shop
VMS PM, Annual (Region 3)	Minimum Requirement	Preventive	Region 3 ITS

Click to add task to asset



Intelligent Transportation Systems

xmWEB™

Web-based Work Requests

[New Work Request](#)[Work Request Status](#)[Assets](#)[Events](#)[Help](#)[Asset](#) | [Details](#) | [Specifications](#) | [Parts](#) | [Comments](#) | [Project Info](#)

Task

VMS, I-5 NB @
Perkins, Hwy1,
MP261.88

Task

VMS PM, Annual (Region 3)

Type

Preventive

Priority

High

Last Done

Class

Minimum Requirement

Choose a priority, then
click save to associate the
task with the asset

Asset Task

ID	Task	Type	Priority	Last Done	Class
1221	VMS PM, Annual (Region 2)	Preventive		6/24/2009 2:41:24 PM	Minimum Requirement
4154	Annual PM, VMS	Preventive			Minimum Requirement



- New Work Request
- Work Request Status
- Assets
- Events
- Help

Asset | Specifications | Parts | Task | **Comments** | Project Info

Next Screen

Asset Details

Asset: VMS, I-5 NB
@ Perkins, Hwy1,
MP261.88

Cost	<input type="text" value="0.0000"/>	Supplier	<input type="text" value="US Traffic"/>	<input type="checkbox"/> Track Only	
Install Date	<input type="text" value="5/1/2004"/>	Manufacturer	<input type="text" value="US Traffic"/>	Latitude	<input type="text" value="45.0279001"/>
Last Maintained	<input type="text" value="6/24/2009"/>	Model Number	<input type="text" value="VMS-LED-W-CM-3Lx18CH-7x5"/>	Longitude	<input type="text" value="-122.9840201"/>
Structure No.	<input type="text" value="19303"/>	Serial Number	<input type="text" value=""/>	Altitude	<input type="text" value=""/>

Structure Type	<input type="text" value="Bridge"/>	Control Number	<input type="text" value="3VM001"/>
----------------	-------------------------------------	----------------	-------------------------------------

Click the button to see the Asset location on Google Maps. Lat/Long units above, should use WGS84 Geo Coordinates.



Intelligent Transportation Systems

xmWEBTM

Web-based Work Requests

- New Work Request
- Work Request Status
- Assets
- Events
- Help

[Asset](#) | [Details](#) | [Specifications](#) | [Parts](#) | [Task](#) | [Project Info](#)

Comments

Put on Work Order

Comments

Highway preservation project moving service, power will be out intermittently through July.

Save Comment

Asset comments appear on every work request for the asset if the box is checked.

Works well for noting special circumstances for an asset such as difficult parking or access, times when the asset is intentionally offline, and intermittent construction impacts.



- New Work Request
- Work Request Status
- Assets
- Events
- Help

Asset | Specifications | Parts | Task | Comments | **Project Info**

Next screen

Asset Details

Asset: VMS, I-5 NB
@ Perkins, Hwy1,
MP261.88

Cost	0.0000	Supplier	US Traffic	<input type="checkbox"/> Track Only
Install Date	5/1/2004	Manufacturer	US Traffic	Latitude 45.0279001
Last Maintained	6/24/2009	Model Number	VMS-LED-W-CM-3Lx18CH-7x5	Longitude -122.9840201
Structure No.	19303	Serial Number		Altitude
Structure Type	Bridge	Control Number	3VM001	

Click the button to see the Asset location on Google Maps. Lat/Long units above, should use WGS84 Geo Coordinates.

Save Asset Details Cancel



Intelligent Transportation Systems

xmWEBTM
Web-based Work Requests

- New Work Request
- Work Request Status
- Assets
- Events
- Help

[Asset](#) | [Details](#) | [Specifications](#) | [Parts](#) | [Task](#) | [Comments](#) |

Project Info

Project Name	<input type="text" value="I-5: Arndt Road and Perkins Road"/>	
Drawing Number(s)	<input type="text" value="ITS-152 to ITS-154"/>	ITS Drawings
Key Number	<input type="text" value="12936"/>	

Project info helps technicians and engineers find documents such as plans and drawings during construction and after.

Link to server location storing plans



Intelligent Transportation Systems

xmWEB™

Web-based Work Requests

- New Work Request
- Work Request Status
- Assets
- Events**
- Help

Select All Events by Event Type (Created, Updated, Deleted) or Asset.

Enter Event Type:

or Enter Asset:

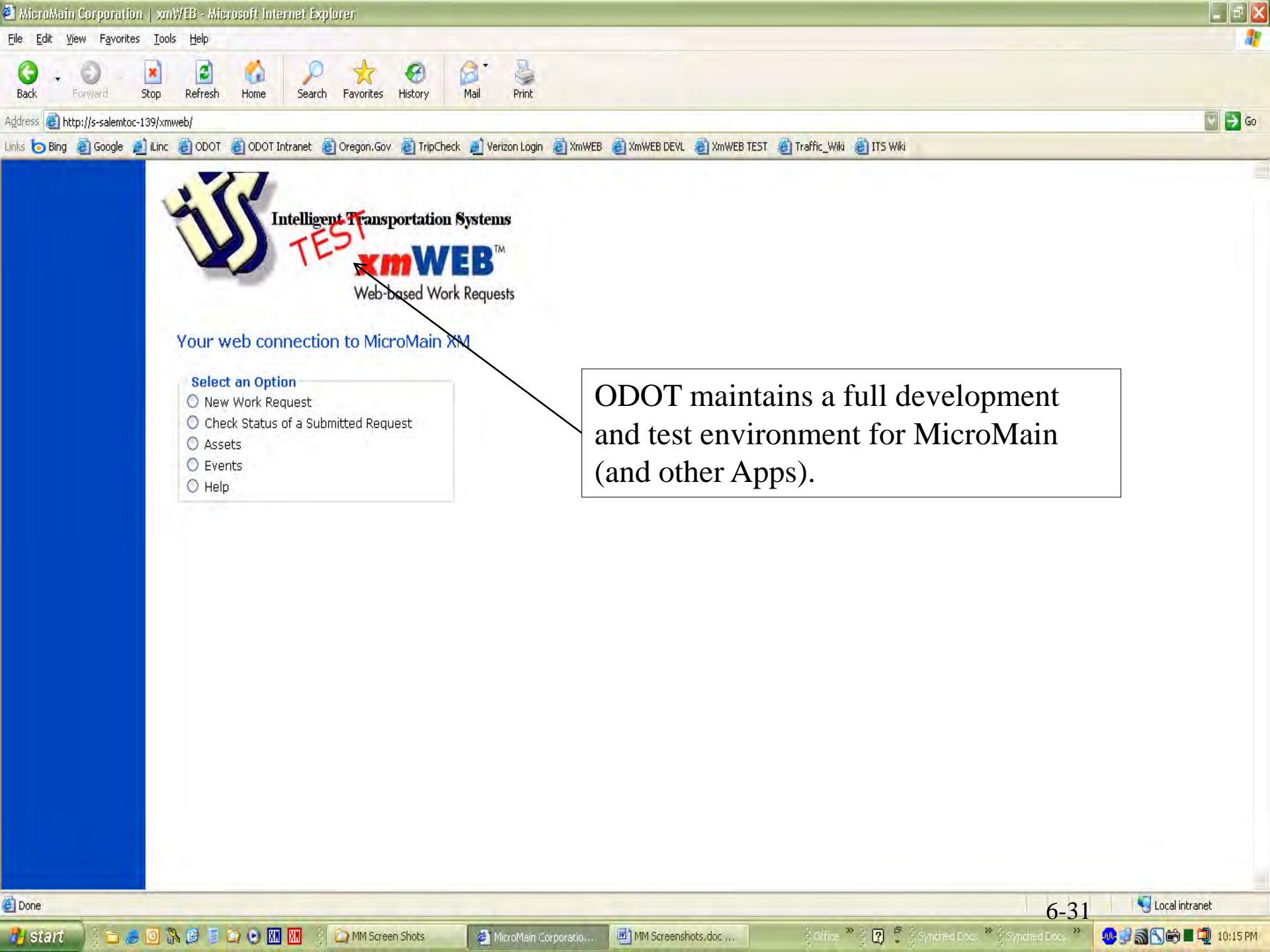
Start Date: ...

End Date: ...

Event log is used as an audit trail for changes to the database

Results 1 - 21

Event	Event Time	UserName	WO	WOnumber	Asset	Labor	Property
Asset Spec - Updated (xmWEB)	5/4/2010 10:03:02 PM	ODOT\isd100	0	0	VMS, I-5 NB @ Perkins, Hwy1, MP261.88	ODOT\isd100	Region 2
Asset Labor - Updated (xmWEB)	5/4/2010 4:27:27 PM	ODOT\hwye76b	0	0		ODOT\hwye76b	
Asset Labor - Updated (xmWEB)	5/3/2010 3:04:42 PM	ODOT\hwye76b	0	0		ODOT\hwye76b	
Asset Labor - Updated (xmWEB)	5/3/2010 2:50:15 PM	ODOT\hwye76b	0	0		ODOT\hwye76b	
Asset Labor - Updated (xmWEB)	5/3/2010 2:49:44 PM	ODOT\hwye76b	0	0		ODOT\hwye76b	
Asset Labor - Updated (xmWEB)	5/3/2010 2:49:13 PM	ODOT\hwye76b	0	0		ODOT\hwye76b	
Asset Labor - Updated (xmWEB)	5/3/2010 2:48:43 PM	ODOT\hwye76b	0	0		ODOT\hwye76b	



Intelligent Transportation Systems

TEST

xmWEB™

Web-based Work Requests

Your web connection to MicroMain XM

Select an Option

- New Work Request
- Check Status of a Submitted Request
- Assets
- Events
- Help

ODOT maintains a full development and test environment for MicroMain (and other Apps).

Conclusion

- Challenges Addressed
- Successful Design Decisions
- Areas ODOT Could Improve
- Areas to Avoid
- Lessons Learned



Challenges Addressed

- Work Flow & Request Process
- Communication of Work Request Status and Prioritization
- Coordination of Effort
- Workload Prioritization
- Preventative Maintenance Scheduling and Tracking
- Change Notification
- Micromain (and our adherence to standards) helps make statewide after hours support possible.



Challenges Addressed

- Asset Inventory Management
- Asset Repair History
- Asset Prioritization
- Asset Condition Rating
- Asset Expenditure Account Tracking



Successful CMMS Design Decisions

- Very simple, fast Request For Work form
 - TOC
 - Technicians on the road
- Focusing on benefits to users in requirements phase
 - Timesheets
 - Asset work history
 - Asset info availability
- Naming convention designed for quick selection



Areas of Future Focus / Improvement

- Performance Measures
- Maintenance Cost Tracking
- Asset Inventory Detail
- Database Housekeeping



Areas to Avoid / Pitfalls

- PDA
 - Synchronization
 - PDA Table updates
 - Version conflict with client
- Barcode Reader
 - Printing barcodes
 - Web form much faster
- Spare Parts Management
 - Administration



Lessons Learned

- Use the Application's Business Rules
- Keep Modifications to a Minimum
- Maintain a Separate Test Environment



Naming Convention

MicroMain	Generic ODOT	Specific Example	Template [Required], {Optional}
Site	ODOT	ODOT	[Database Owner]
Property	Region	Region 1	[Logical Divisions]
Asset (Area)	District	District 2B	[Subdivisions]
Asset (Area)	Field Location	I-5 @	[Highway Name] @ [Nearest or Monument]
Asset(Equipment)	Camera	Camera, I-205 @ , Hwy64 MP19.1	[Asset Group], [Hwy Name] [Direction of Traffic Flow] @ [Nearest or Monument], {Hwy #}, {Milepoint}
Asset (Vehicle)	PVMS	PVMS, RE052900, P2-03-02	[Asset Class], [Vehicle ID], [Sign Designation]
Part	Part	RWIS, Flash Card, 6061-4042, 5025 ESP	[Asset Group], [Part Name], {Manufacturer part#}, {Firmware rev}

